

# **NEXX 10SC**

## **80% ROLLING CHASSIS**

### **INSTRUCTION MANUAL**



- **PILLOW BALL FRONT SUSPENSION**
- **STEEL RING & PINION**
- **PLASTIC SPUR GEAR**
- **REALISTIC HIGH TRACTION TIRES**
- **CNC ALUMINUM MOTOR MOUNT**
- **NEW CHASSIS & MUD GUARDS**







## IMPORTANT-READ THIS BEFORE RUNNING

### 1. Before Starting

- Please read manual carefully (With a parent, guardian or a responsible adult if necessary).

### 2. While Operating

- Any running area you choose must be dry. Do not run vehicle near any water or wet areas.
- Do not run on public streets. It is very easy to have the car run over or be damaged by hitting the curb.
- Do not operate the car in tight confined places. The vehicle is very fast and will easily hit something.
- Do not run near people or animals. The car is very fast and could easily seriously injured someone.
- Do not operate the car at night. You will not be able to drive it safely.

### 3. Before Operating

- Make sure that all screws and nuts are properly tightened.
- Always use fresh batteries for your transmitter and receiver before running the car. If the radio does not have full control of the car with steering, throttle and brake. Do not run it until corrected. Failure to correct this will result in possible injury and damage to the car or property. We strongly recommend using a failsafe. *But remember failsafe does not protect all power is lost in vehicle.*
- Please confirm the steering and throttle is at neutral position.

### 4. Check Your Vehicle After Running

- Turn OFF receiver first, then turn OFF transmitter. This will prevent the car from losing control.
- After running radio controlled car, it is necessary to perform routine maintenance.

### 5. Battery Safety

- Please be careful when handling the battery. It will be hot after running. If the wire is frayed, a short circuit can cause a fire.

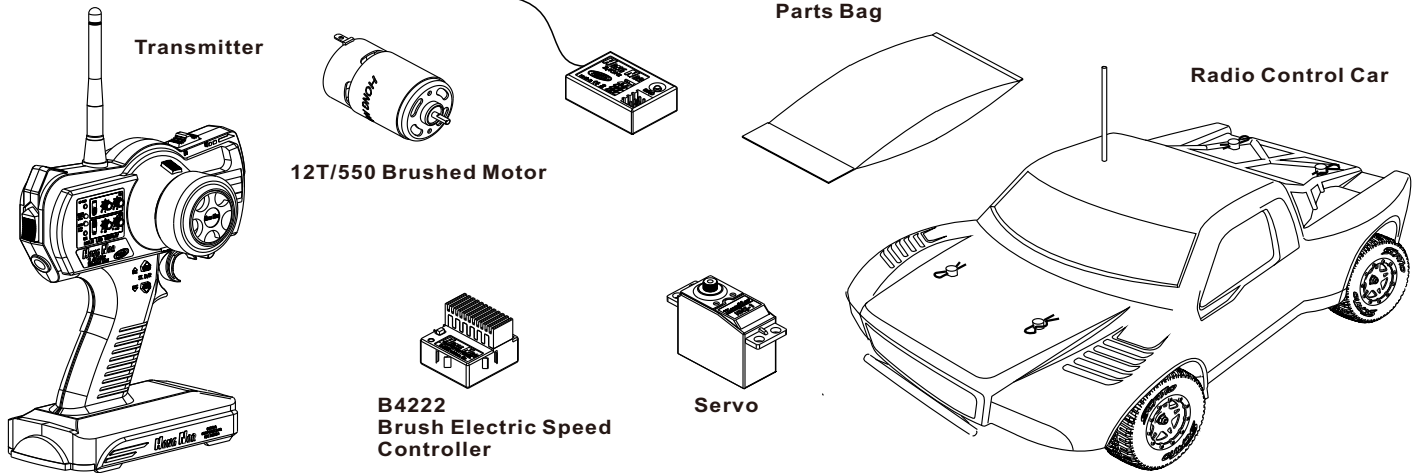
**WARNING:** To avoid a possible fire hazard, always unplug the battery. Do not leave your vehicle unattended with the battery plugged.



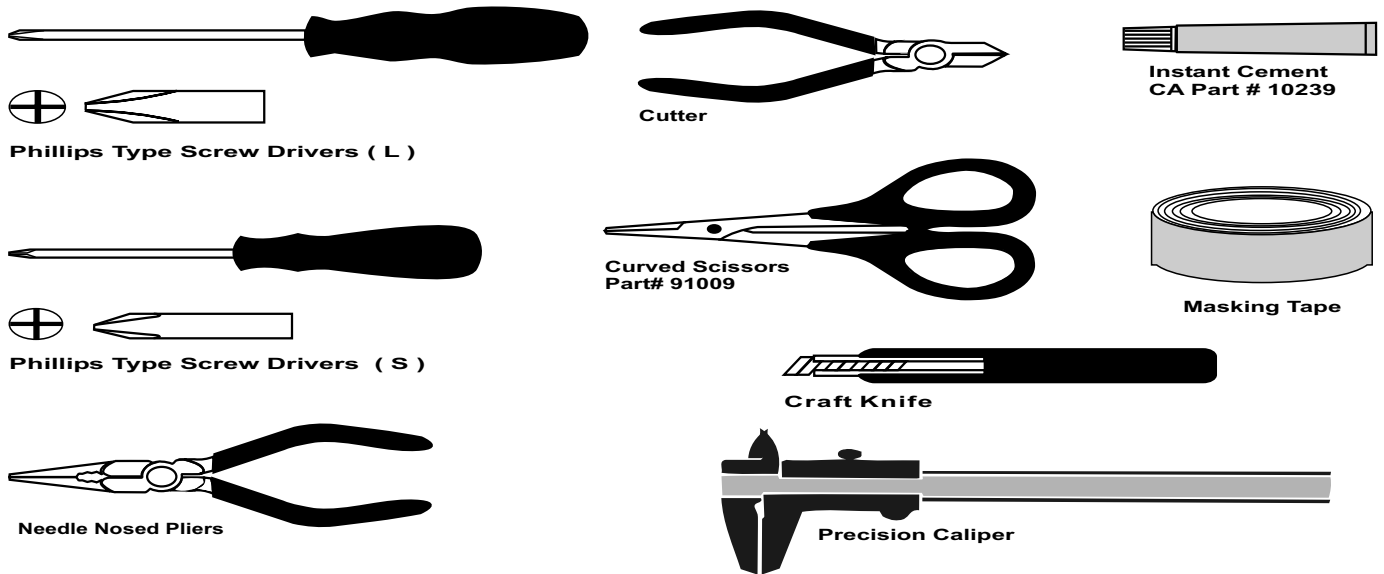


# OVERVIEW

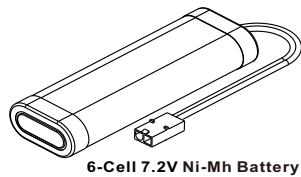
## Components



## TOOLS NOT INCLUDED IN THE KIT



## Equipment Needed

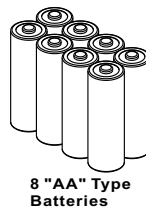
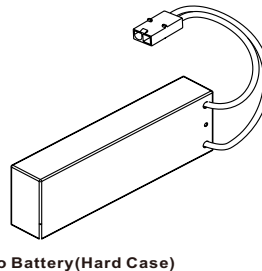


**CAUTION**

\*Can use 7.2V 6-Cell Ni-Mh battery pack or 7.4V Li-Po battery (hard case). Other type of batteries may cause damages to your electronic speed controller and motor.

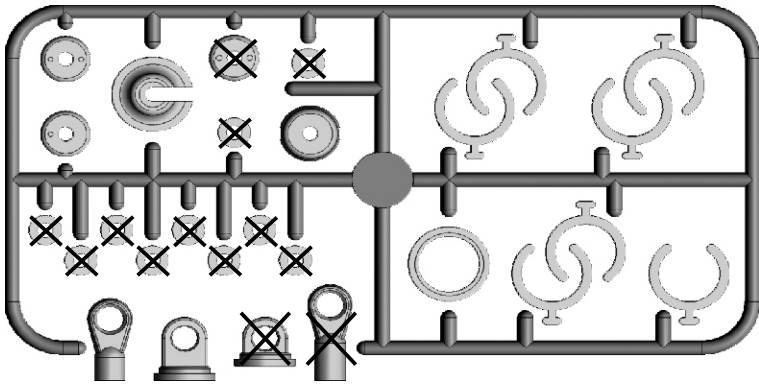
\*It is important that you read all precautions and instructions supplied by the charger and battery manufacturers. Make sure you understand how to use your batteries correctly and use them with required chargers.

\*Be aware that Hong Nor Enterprise shall not be liable for any indirect, incidental or consequential damages caused by inappropriate installation or use of batteries in Hong Nor models.

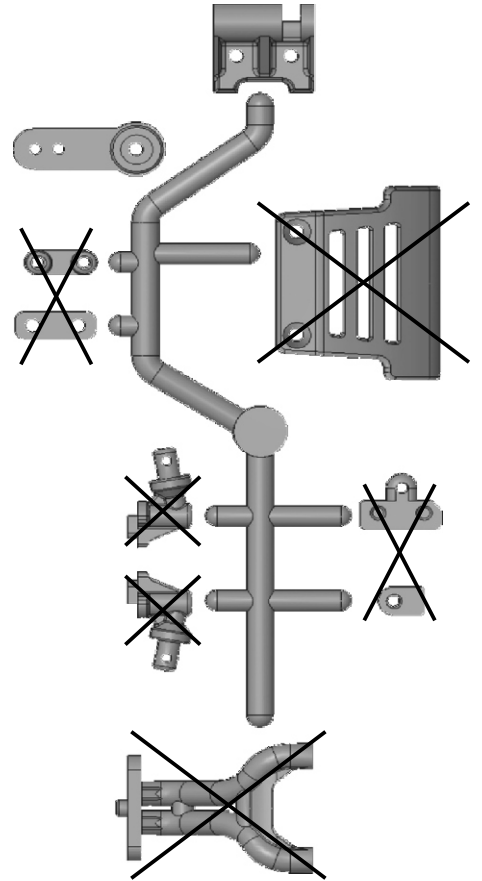


# PLASTIC PARTS FOR USE

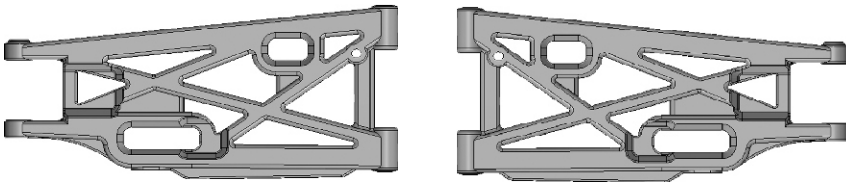
37100  
SHOCK ABSORBER



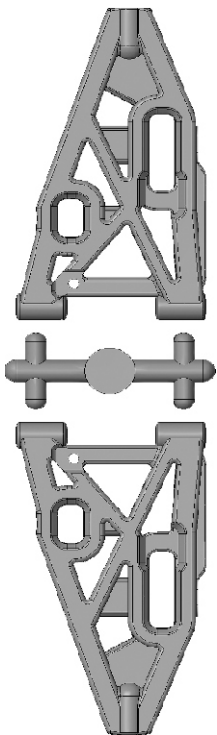
40921  
BUMPER & RADIO TRAY POST & BODY POST



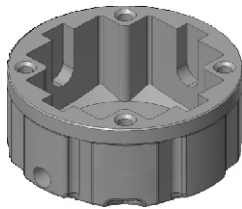
40970  
REAR LOWER ARM



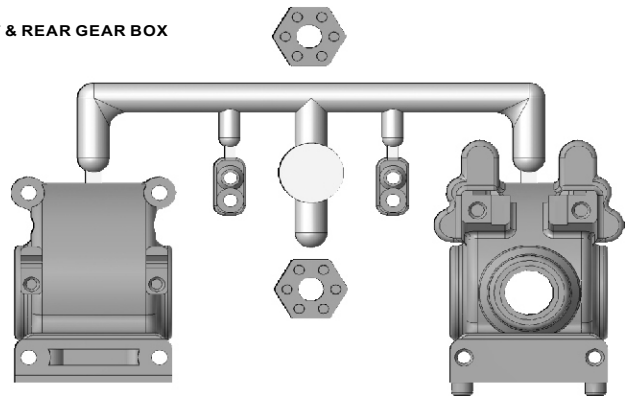
40931  
FRONT LOWER ARM



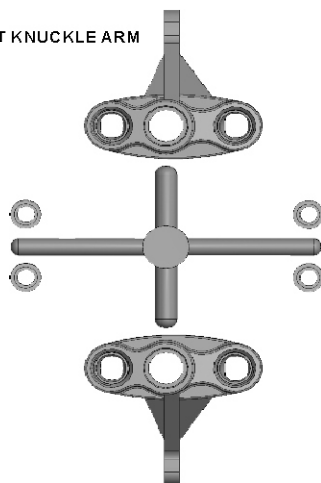
40835  
DIFF. CASE



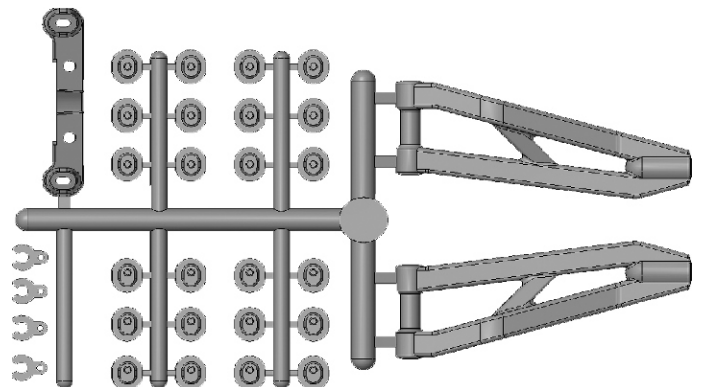
40840  
FRONT & REAR GEAR BOX



40932  
FRONT KNUCKLE ARM

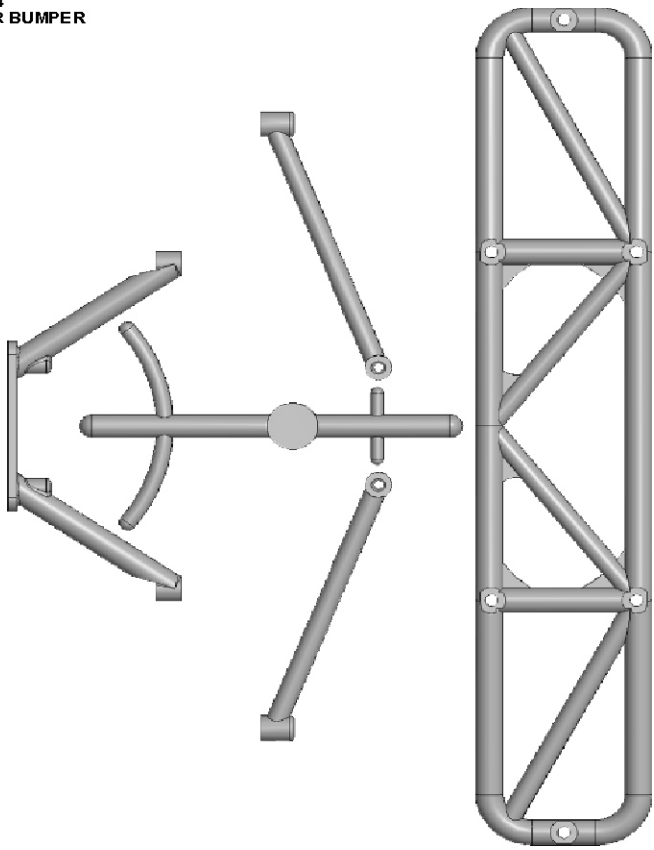


40930  
FRONT UPPER ARM AND ARM HOLDER

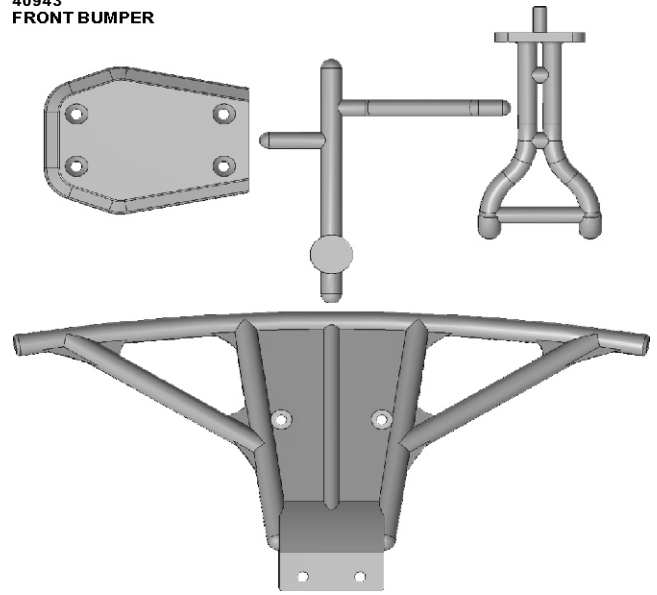


PLASTIC PARTS FOR USE

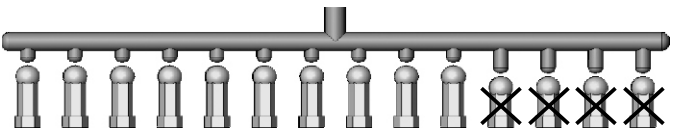
40944  
REAR BUMPER



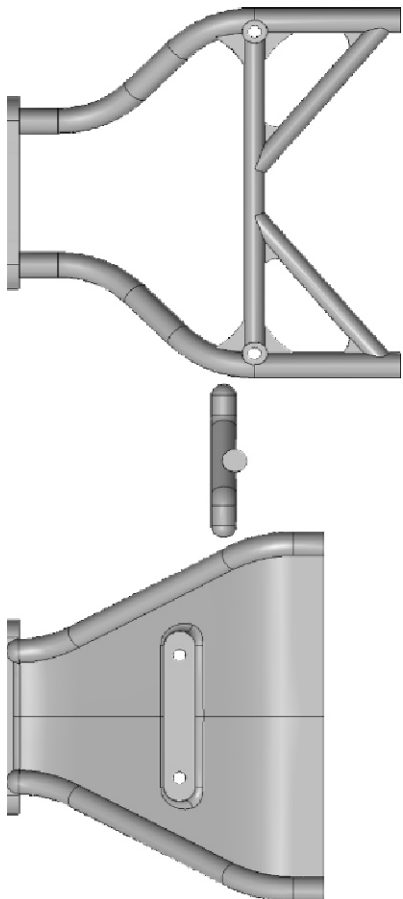
40943  
FRONT BUMPER



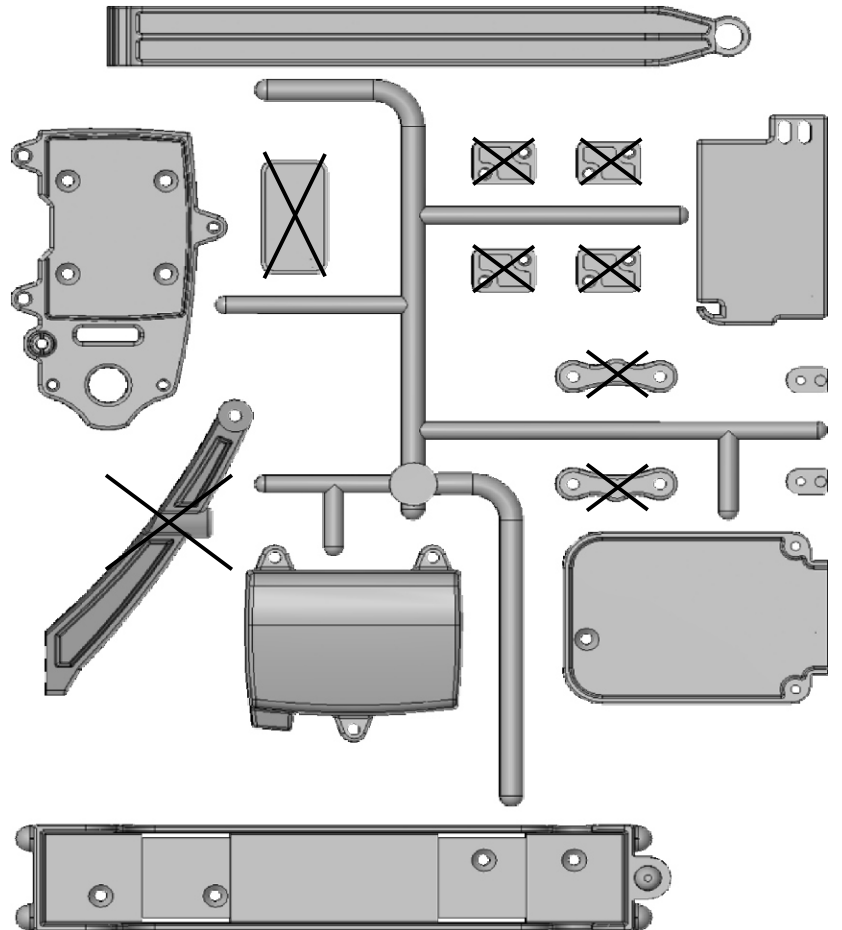
37381  
BALL END (4mm)



40945  
REAR BUMPER BRACE

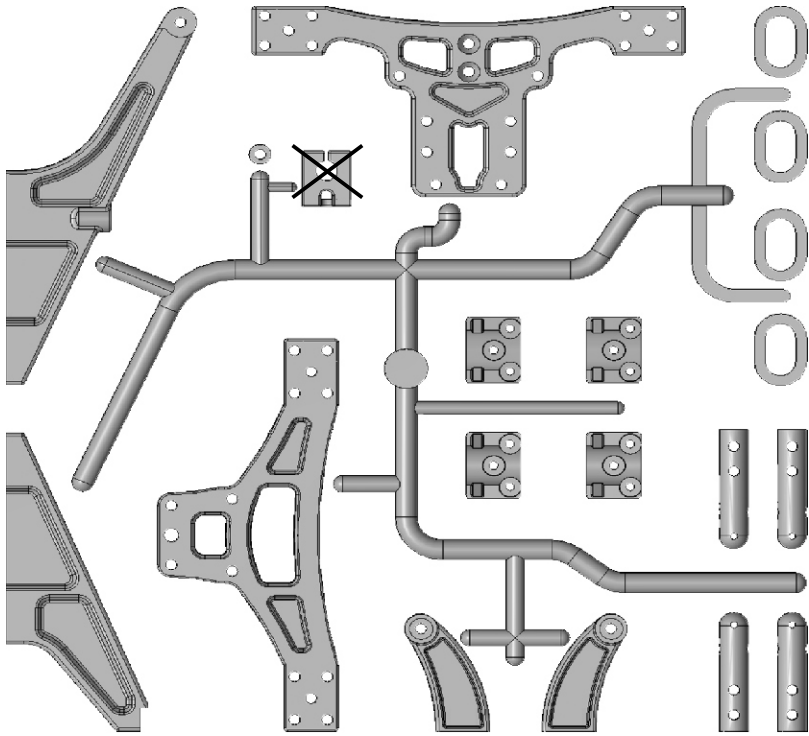


40946  
BATTERY CASE & RECEIVER BOX

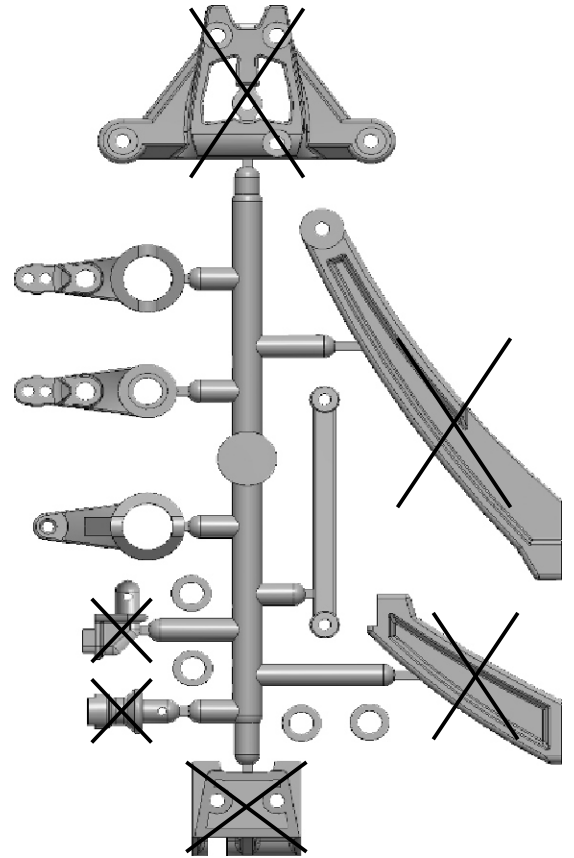


PLASTIC PARTS FOR USE

40947  
BODY POST & CENTER BRACE



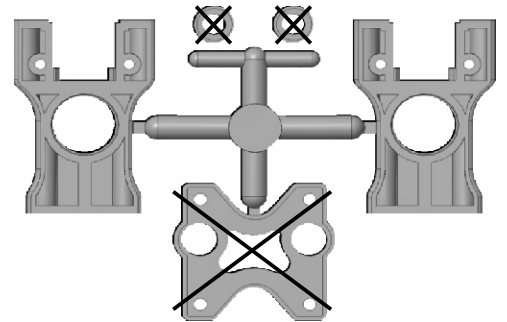
40834  
SERVO SAVER



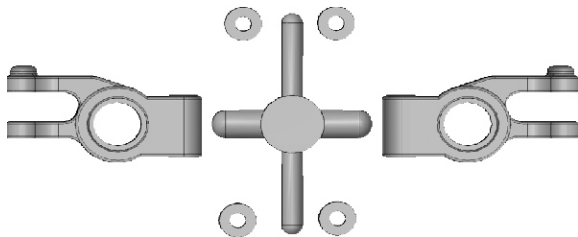
40948  
SPUR GEAR (46T)



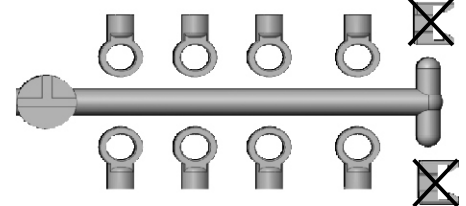
40844  
CENTER DIFF. MOUNT



40843  
REAR UPRIGHT



40848  
STABILIZER BALL END



SYMBOL USED THROUGHOUT THE INSTRUCTION MANUAL



Parts Bag Used



Degrease With Motor Spray



Do Not Over Tighten



Tighten



Ensure Free Movement

Ensure Free Movement



Contact Adhesive



Apply Screw Cement



Apply Oil



Apply Grease



True-To-Scale



Clockwise Rotation

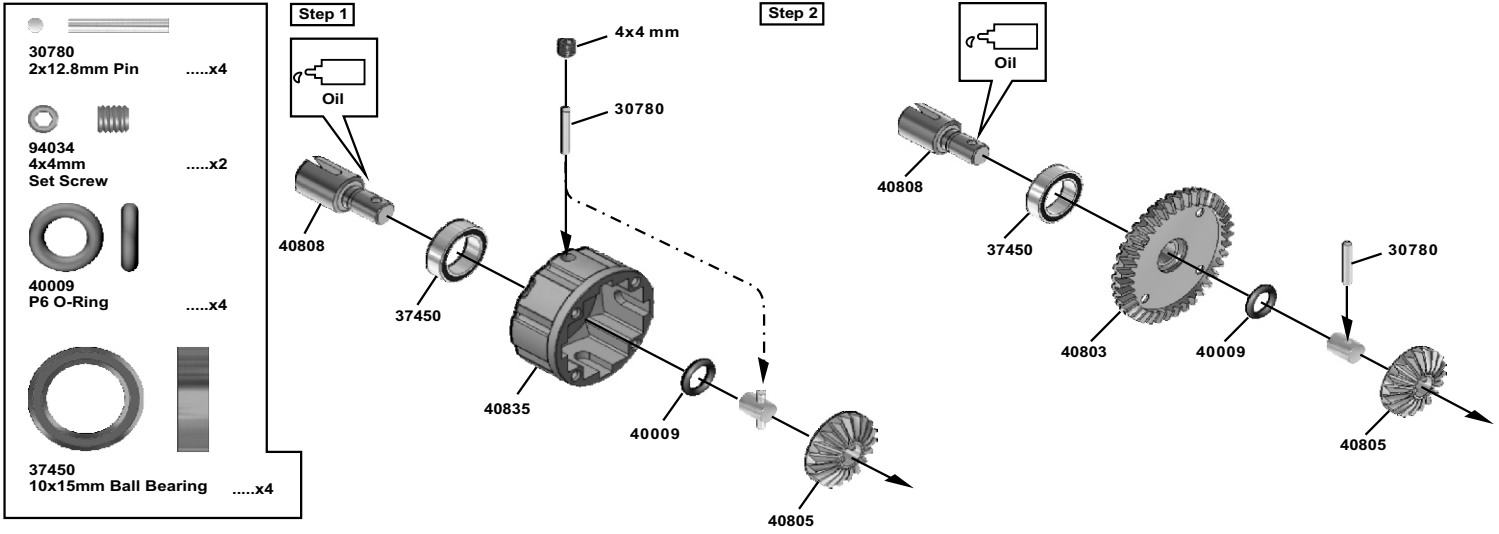


Anti-clockwise Rotation



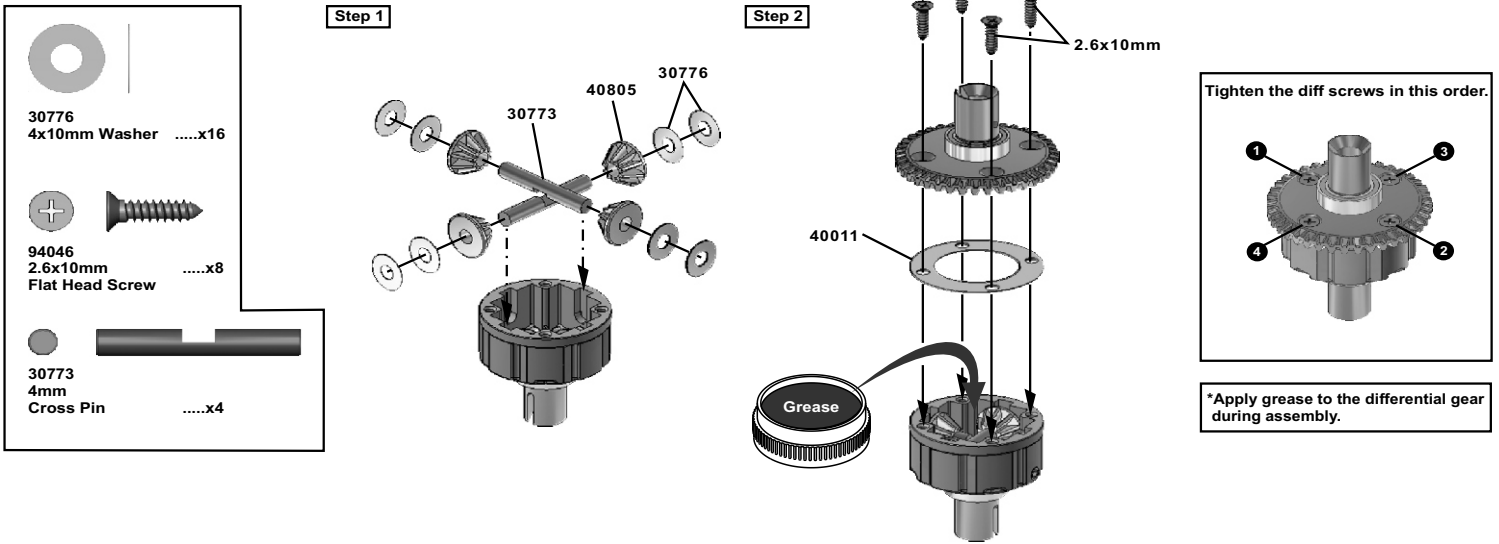
# 1 ASSEMBLY OF THE FRONT AND REAR DIFF.

\*Build two differentials for front and rear.

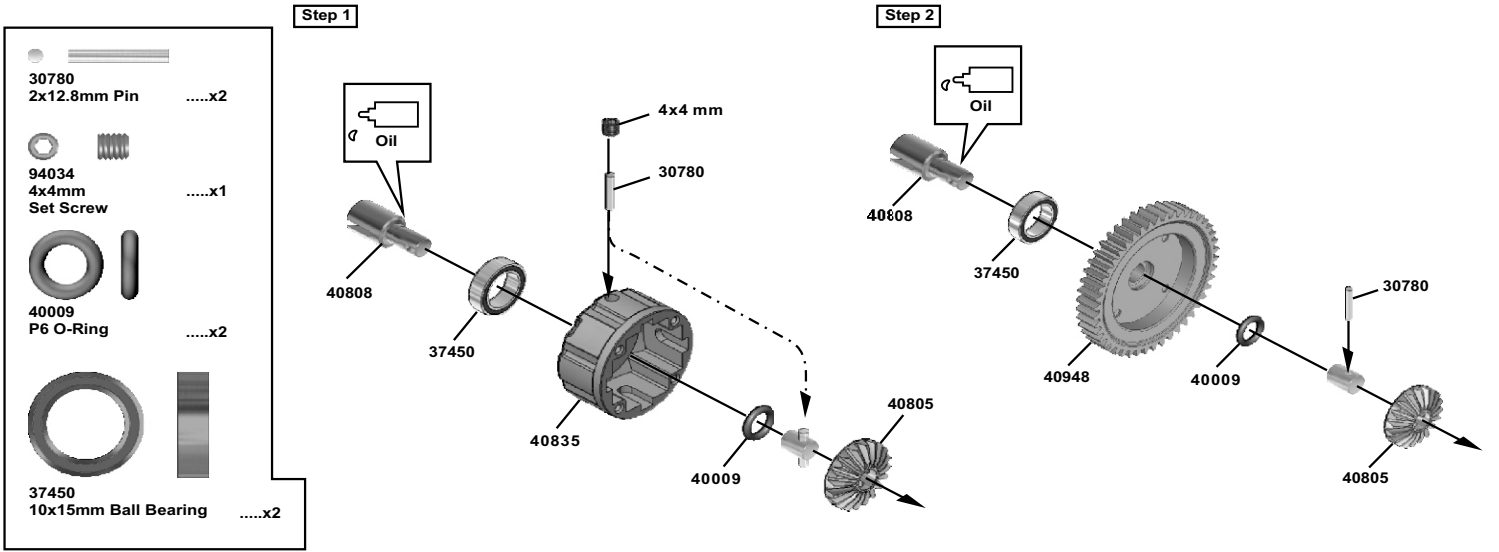


# 2 ASSEMBLY OF THE FRONT AND REAR DIFF.

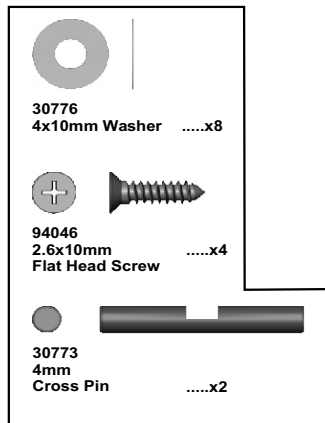
\*Build two differentials for front and rear.



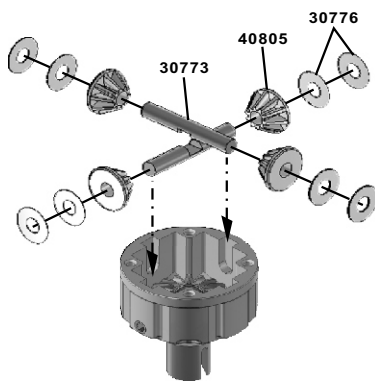
# 3 ASSEMBLY OF THE CENTER DIFF.



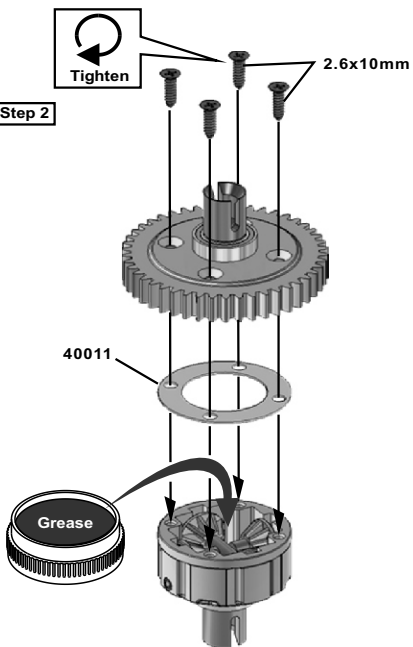
#### 4 ASSEMBLY OF THE CENTER DIFF.



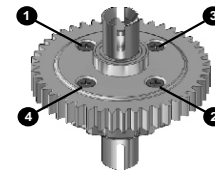
Step 1



Step 2

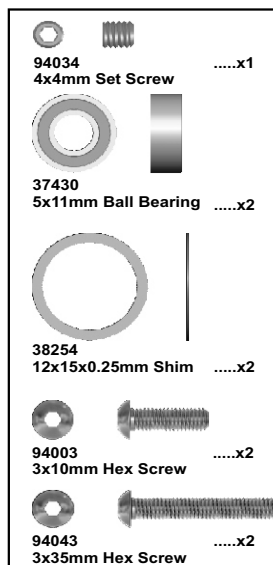


Tighten the diff screws in this order.

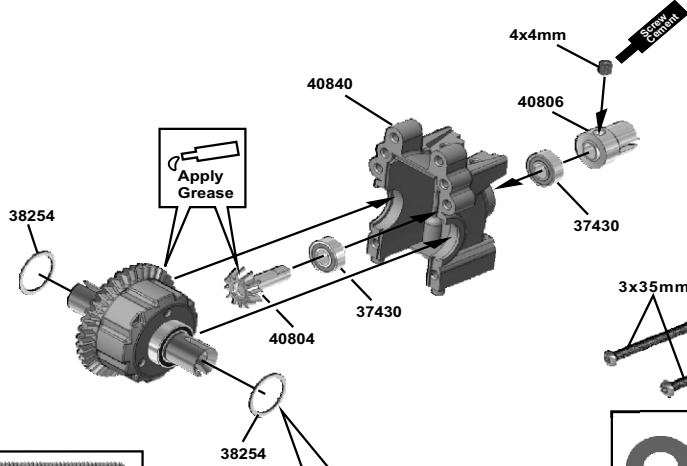


\*Apply grease to the differential gear during assembly.

#### 5 ASSEMBLY OF THE FRONT GEAR CASE

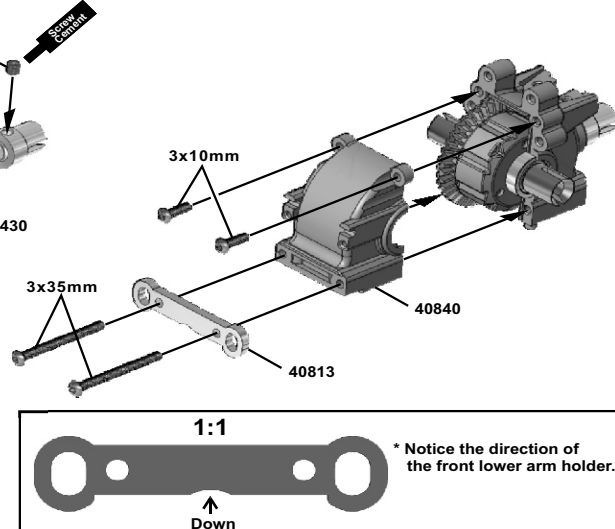


Step 1

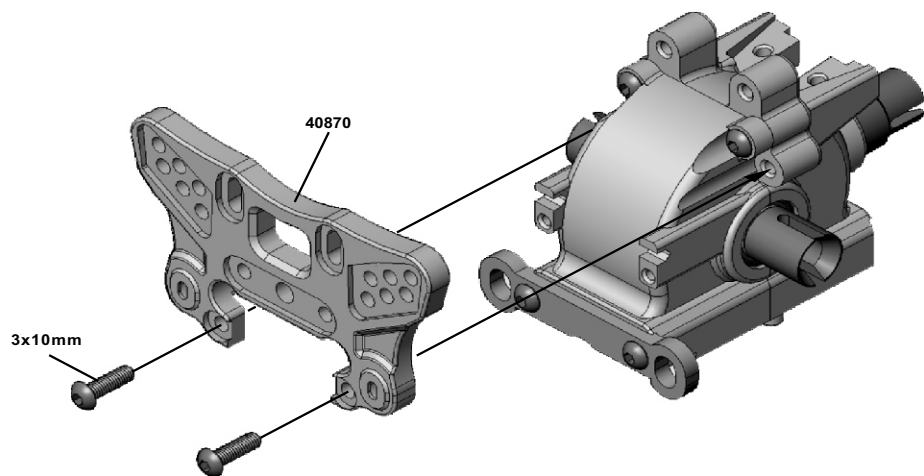
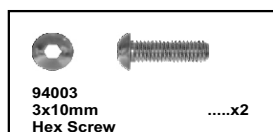


\*Adjust the backlash with the shims.

Step 2

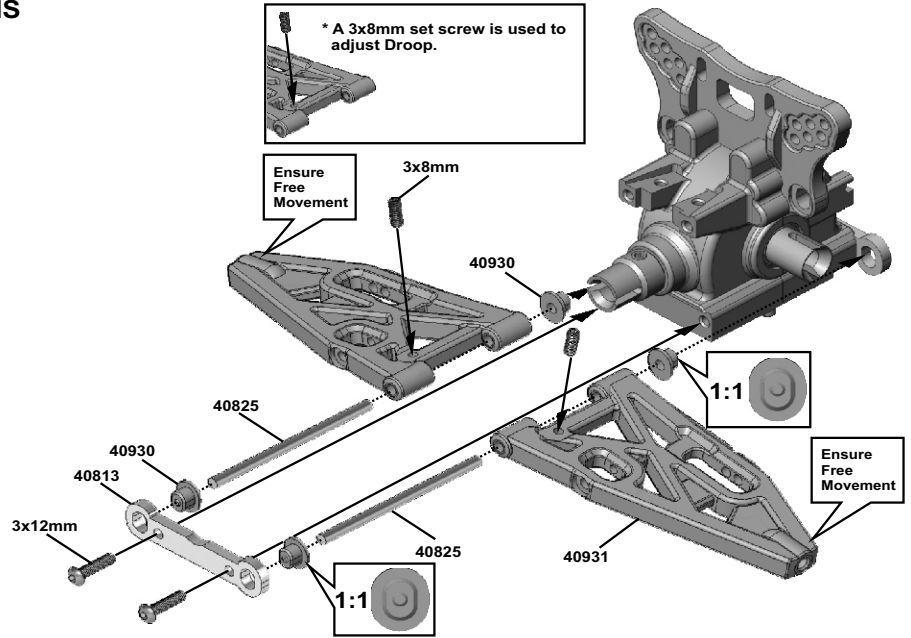
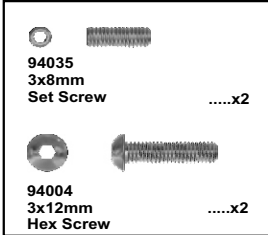
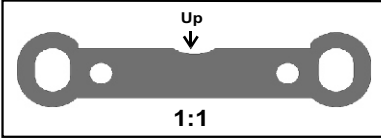


#### 6 ASSEMBLY OF THE FRONT SHOCK STAY



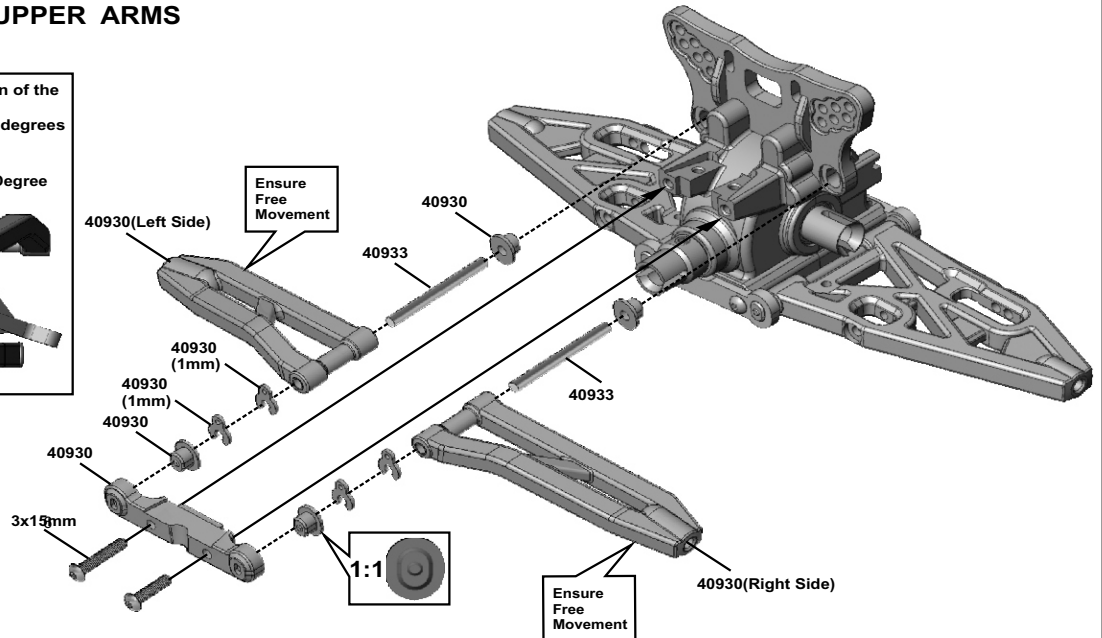
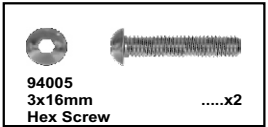
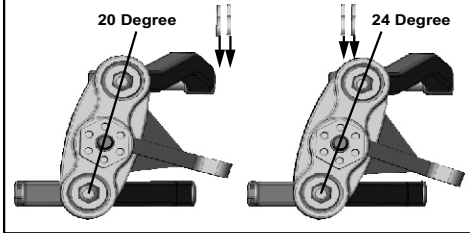
## 7 ASSEMBLY OF THE FRONT LOWER ARMS

\* Notice the direction of the front lower arm holder in rear.



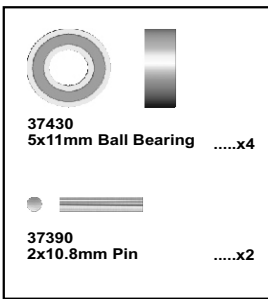
## 8 ASSEMBLY OF THE FRONT UPPER ARMS

\*Adjust the caster angle by changing the position of the caster angle spacer on the top arm.  
\*Caster angle adjustments can be made from 20 degrees to 24 degrees.



## 9 ASSEMBLY OF THE KNUCKLE ARMS

Assemble for both right and left side.

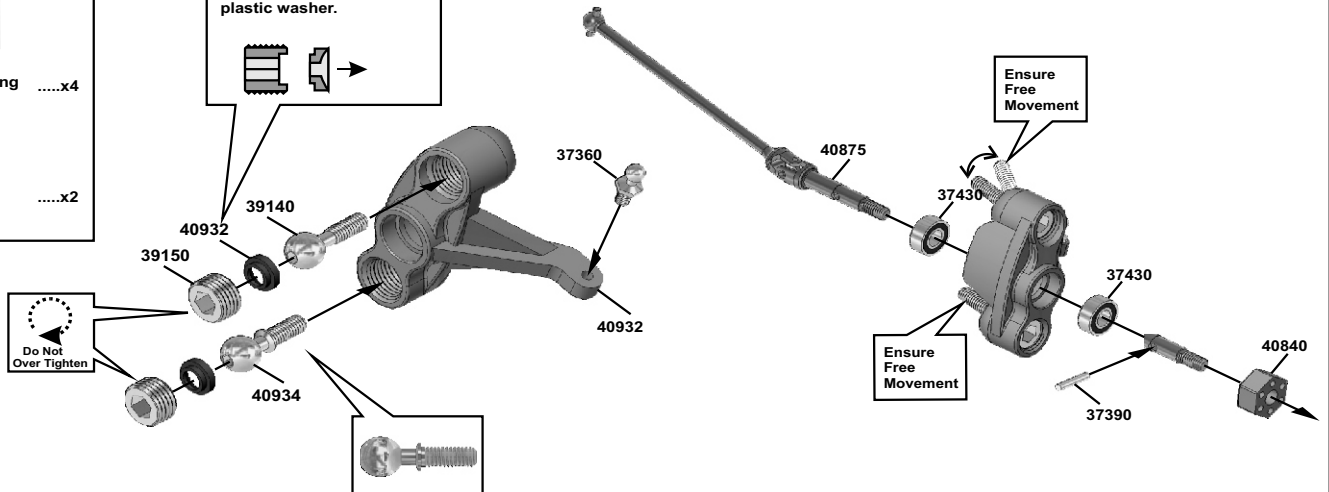


Step 1

\*Notice the direction of the plastic washer.

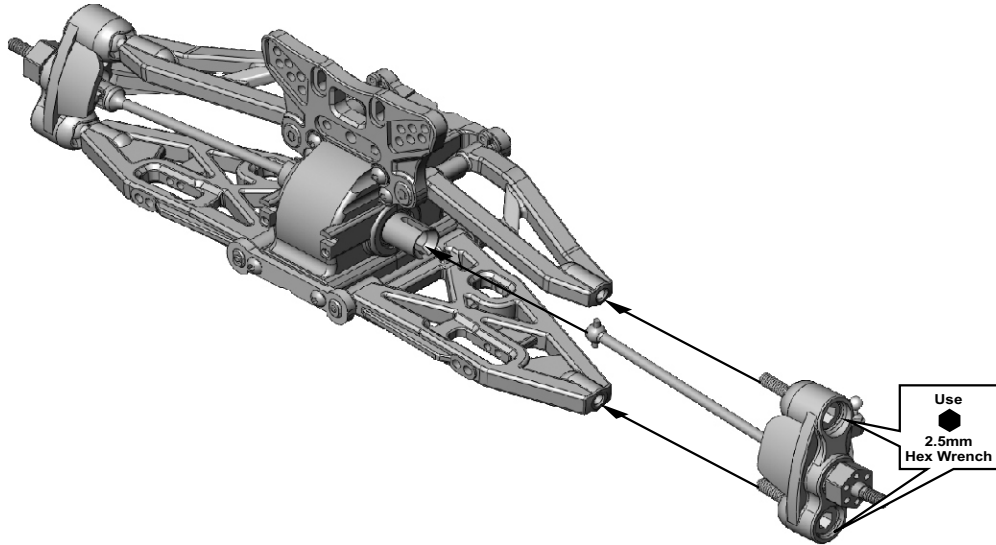


Step 2



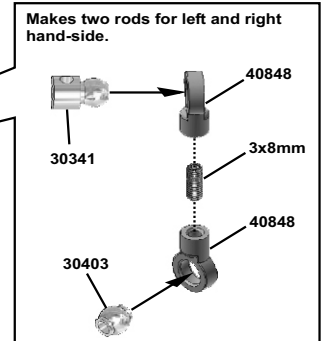
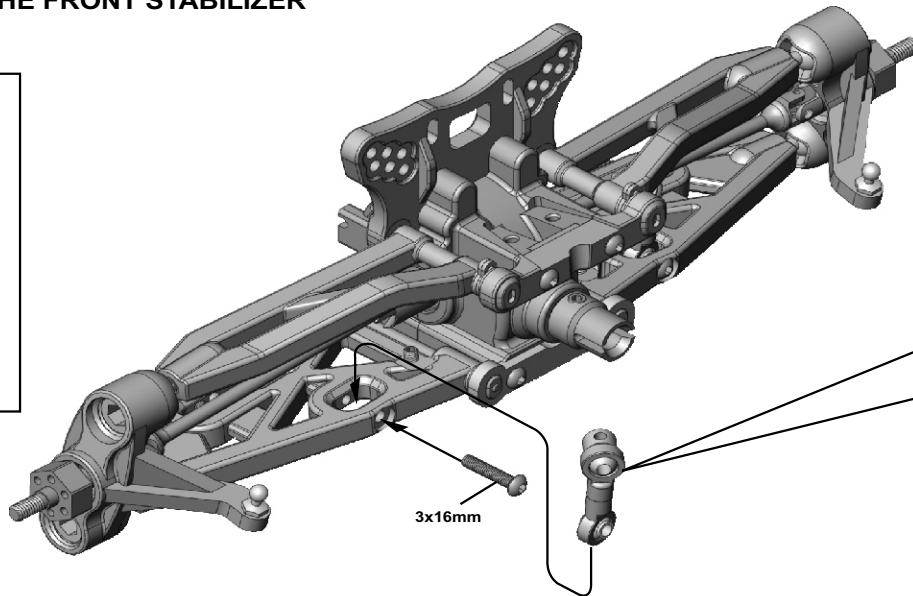
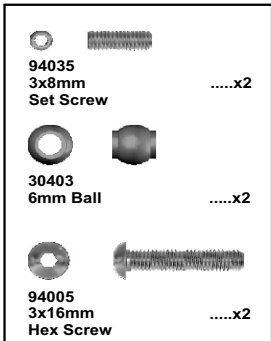
## 10 ASSEMBLY OF THE KNUCKLE AND FRONT SUSPENSION ARMS

Assemble for both right and left side.

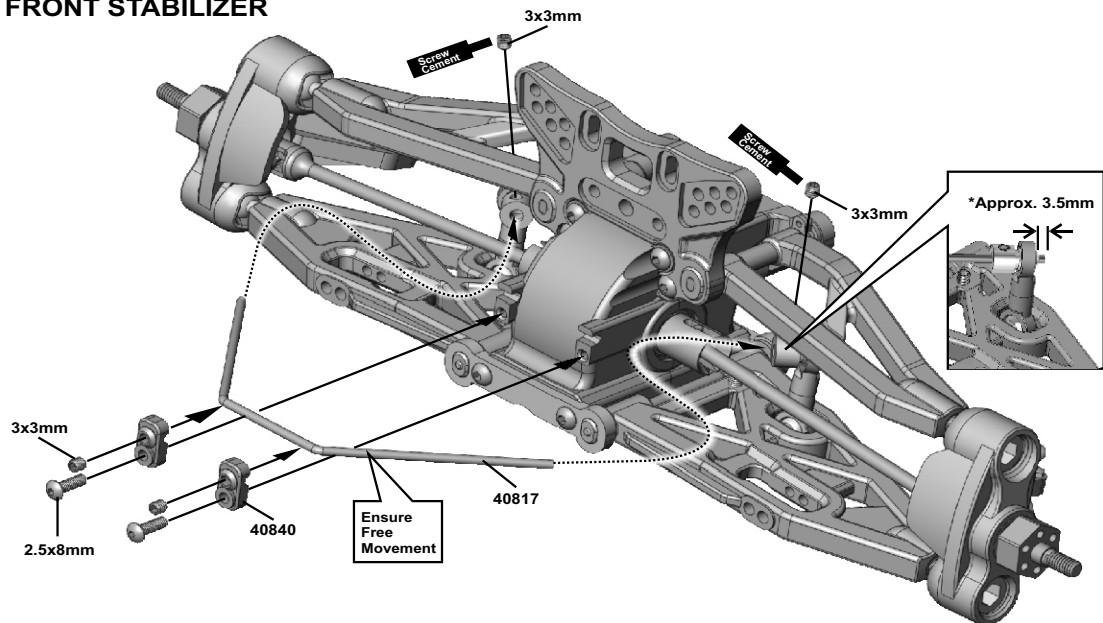
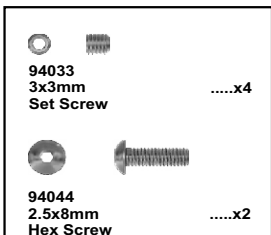


## 11 ASSEMBLY OF THE FRONT STABILIZER

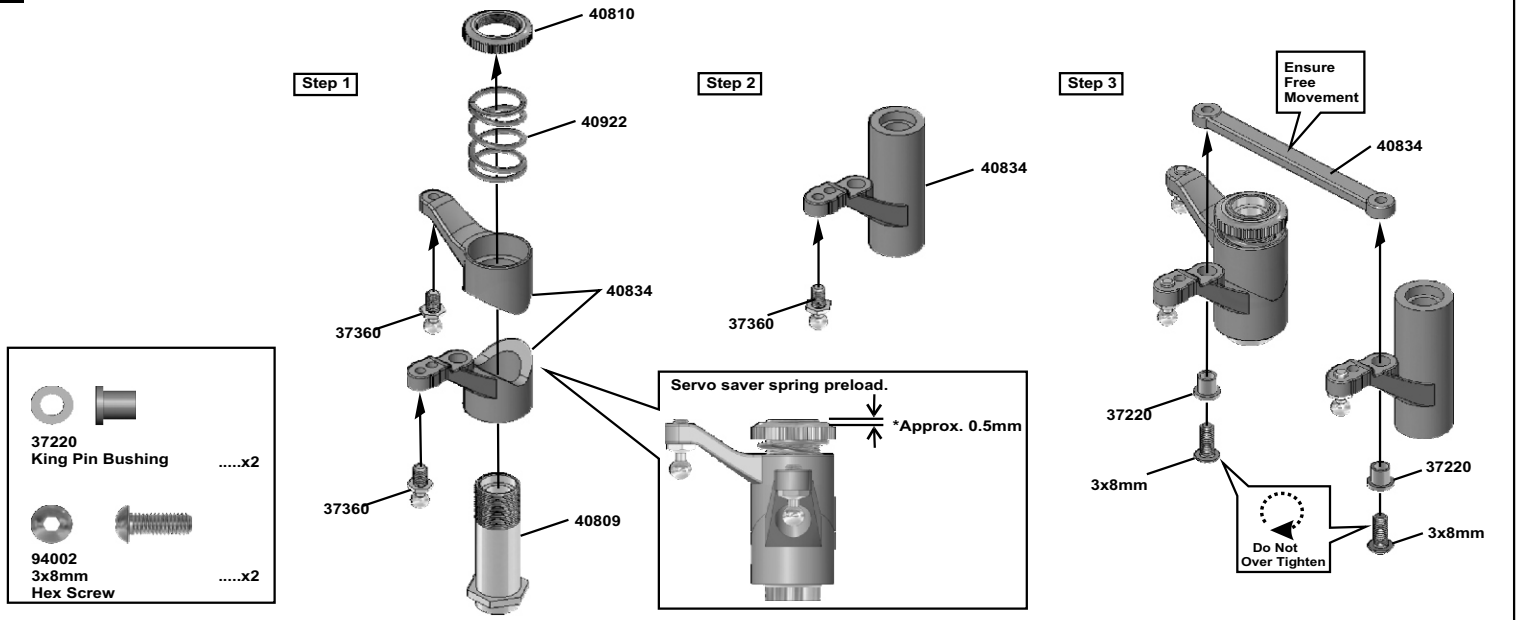
Assemble for both right and left side.



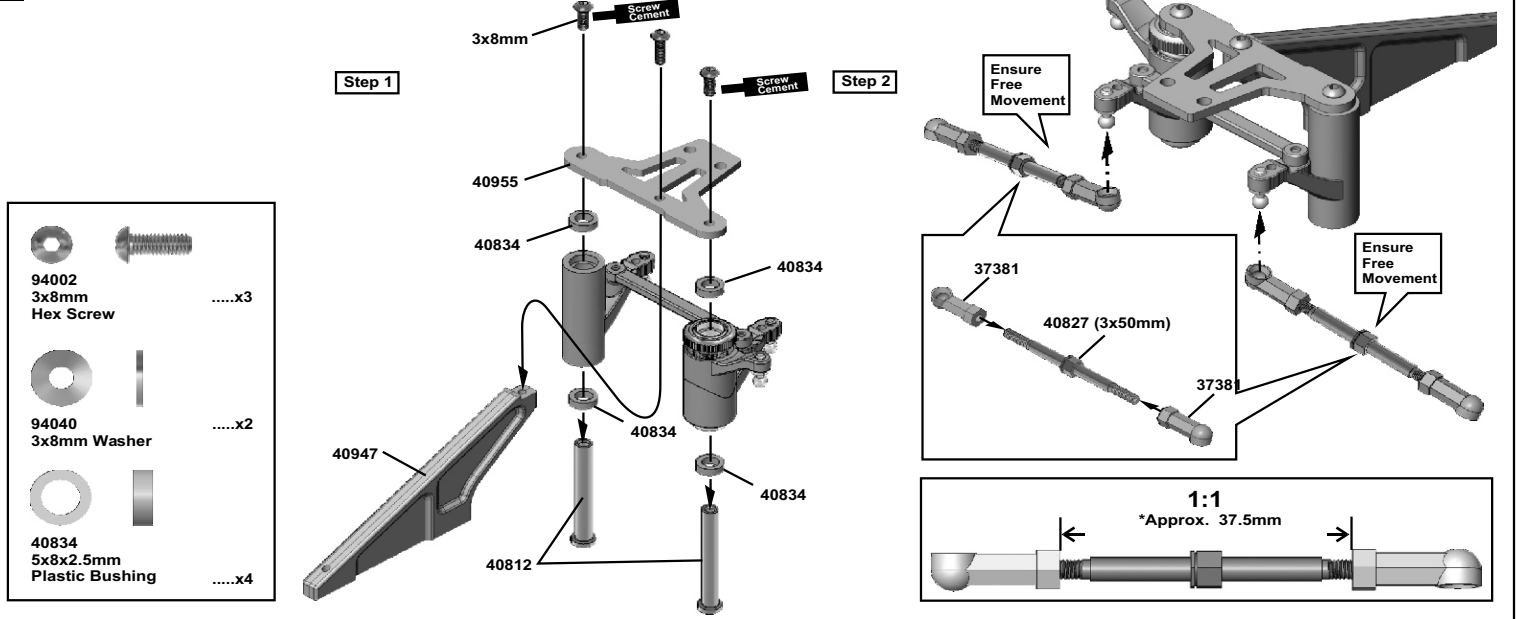
## 12 ASSEMBLY OF THE FRONT STABILIZER



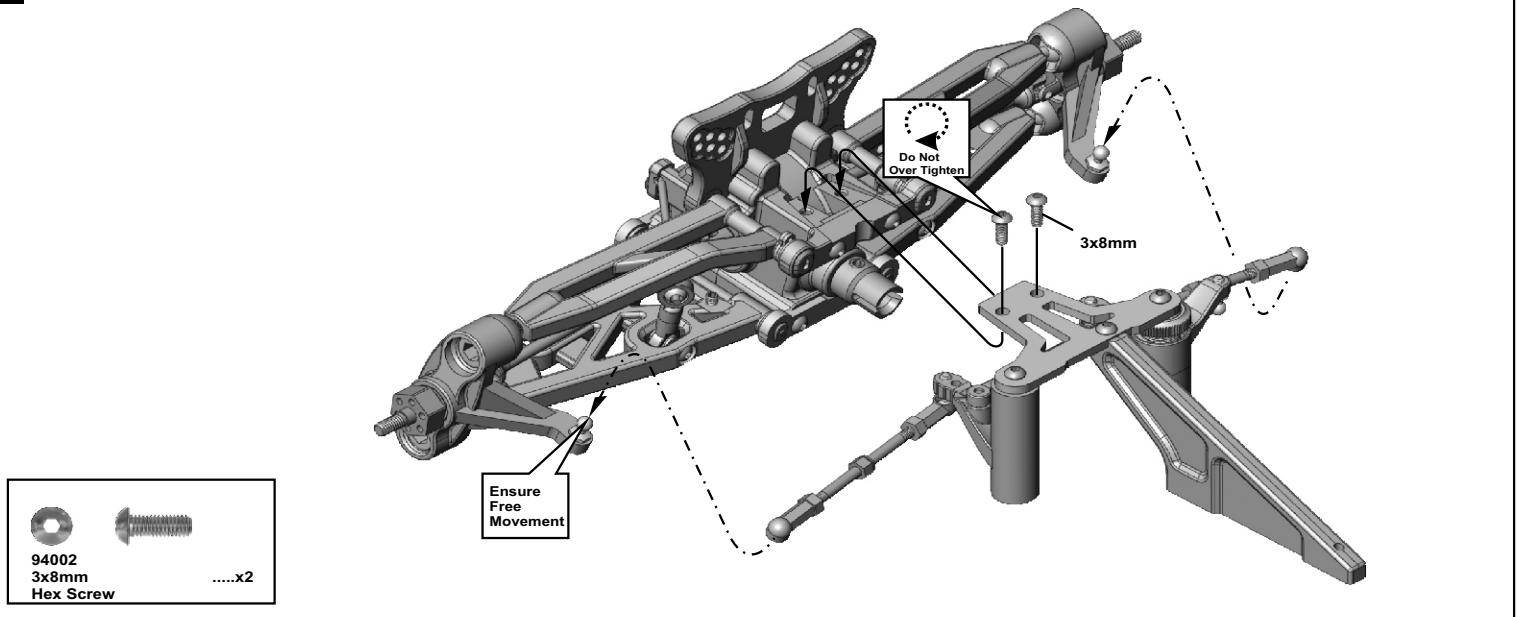
### 13 ASSEMBLY OF THE SERVO SAVER



### 14 ASSEMBLY OF THE SERVO SAVER AND THE STEERING TIE-ROD



### 15 ASSEMBLY OF THE SERVO SAVER ONTO THE FRONT GEAR BOX

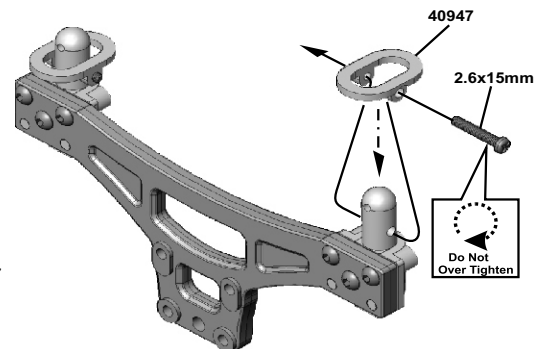
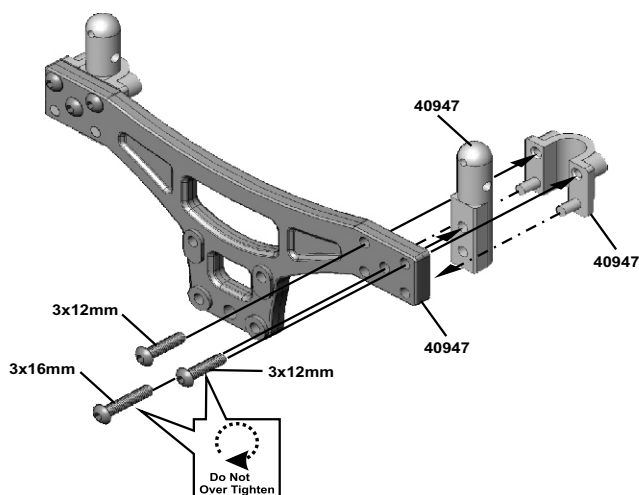
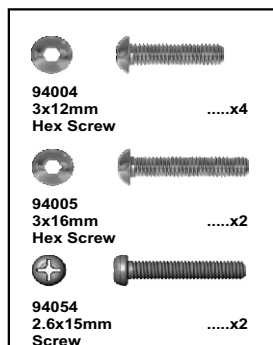


## 16 ASSEMBLY OF THE FRONT BODY POST

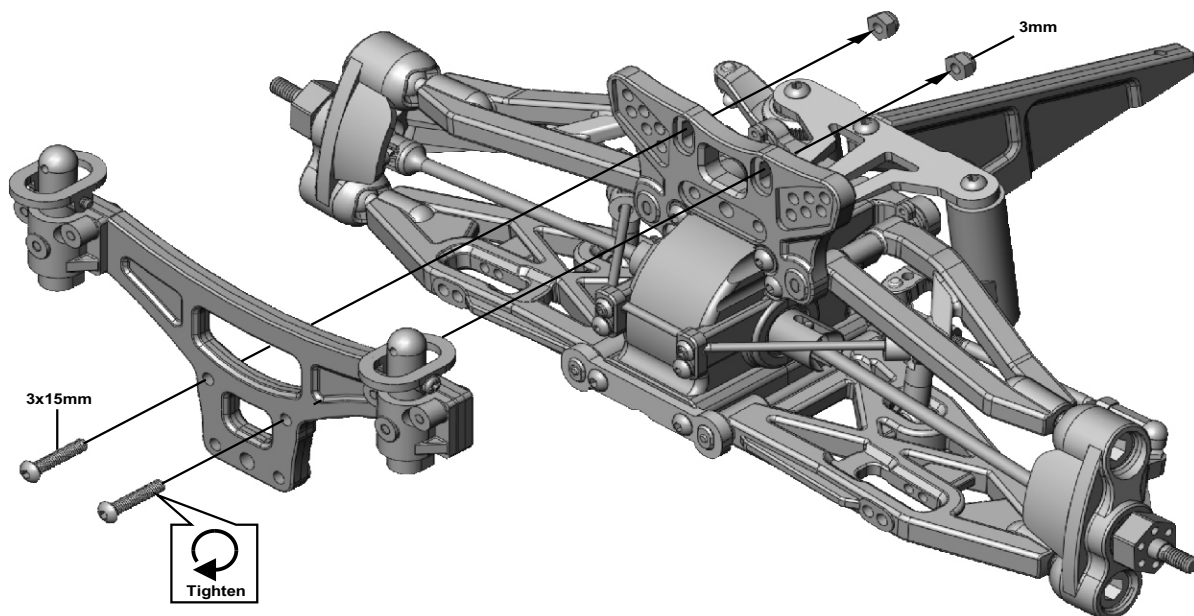
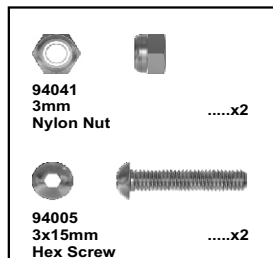
Assemble both right and left sides.

Step 1

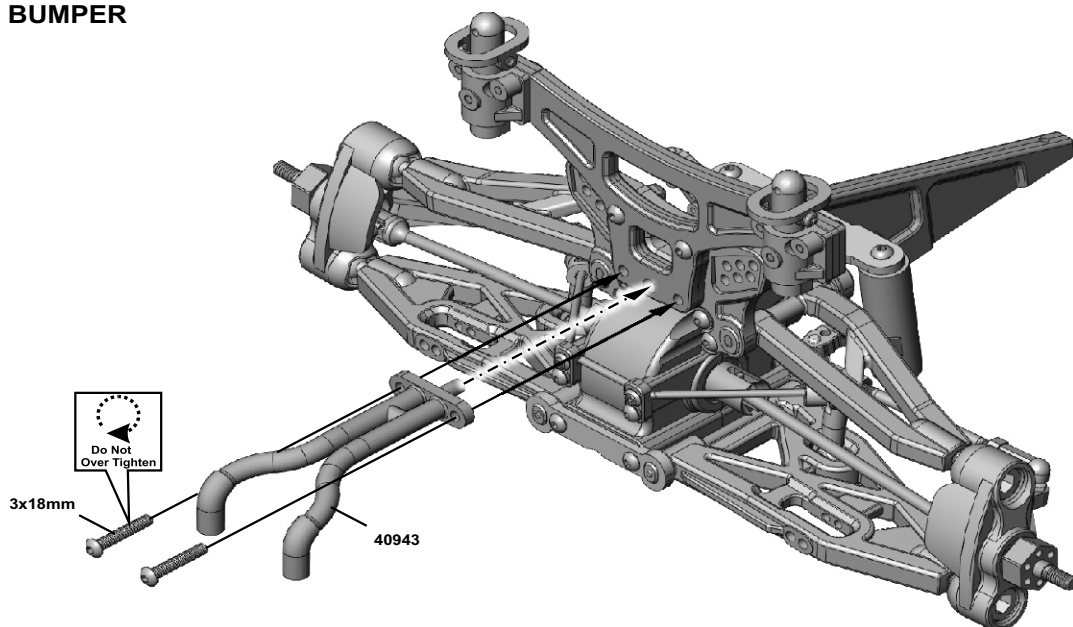
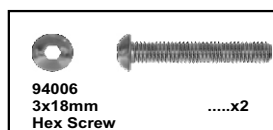
Step 2



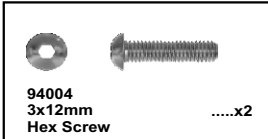
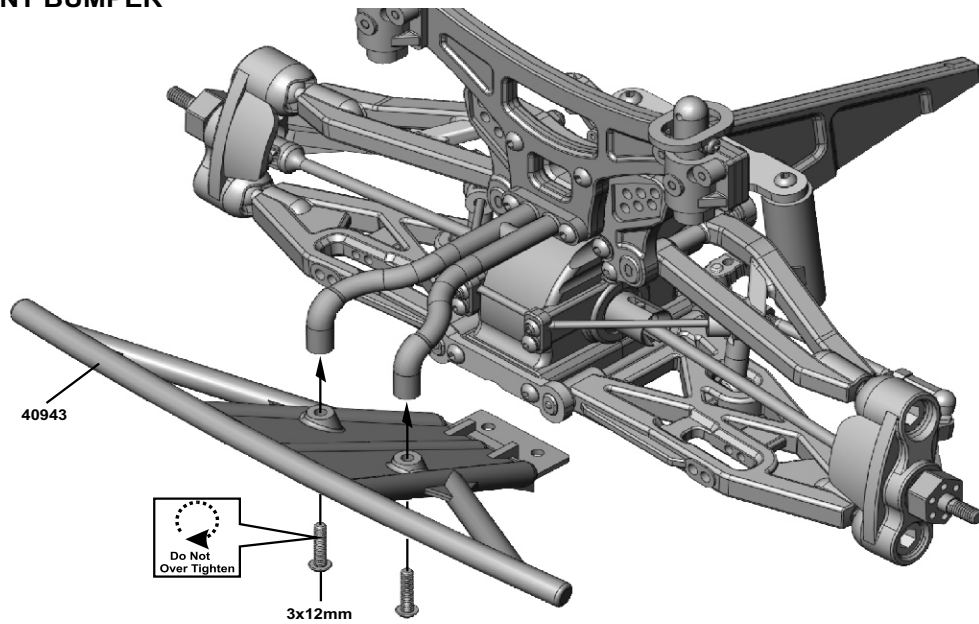
## 17 ASSEMBLY OF THE FRONT BODY STAY ONTO FRONT GEAR CASE



## 18 ASSEMBLY OF THE FRONT BUMPER

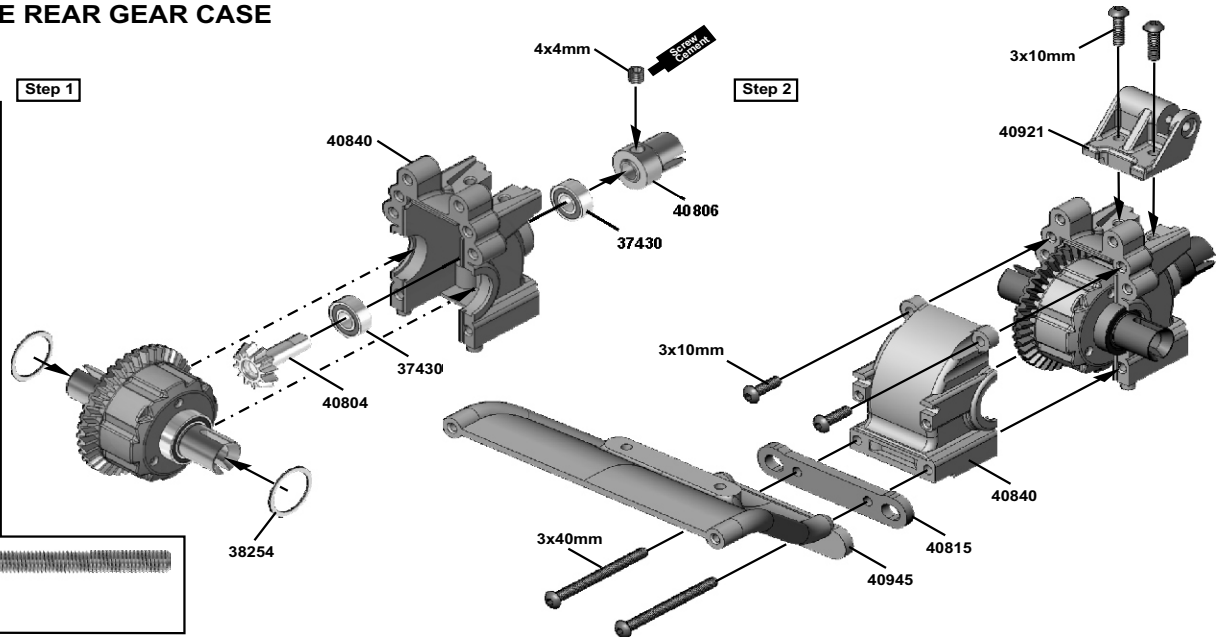
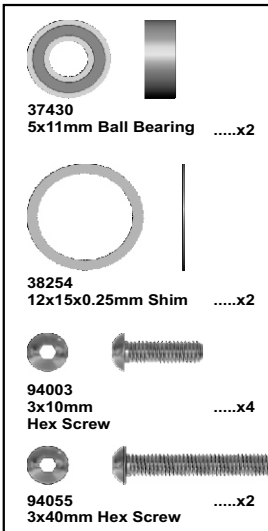


## 19 ASSEMBLY OF THE FRONT BUMPER

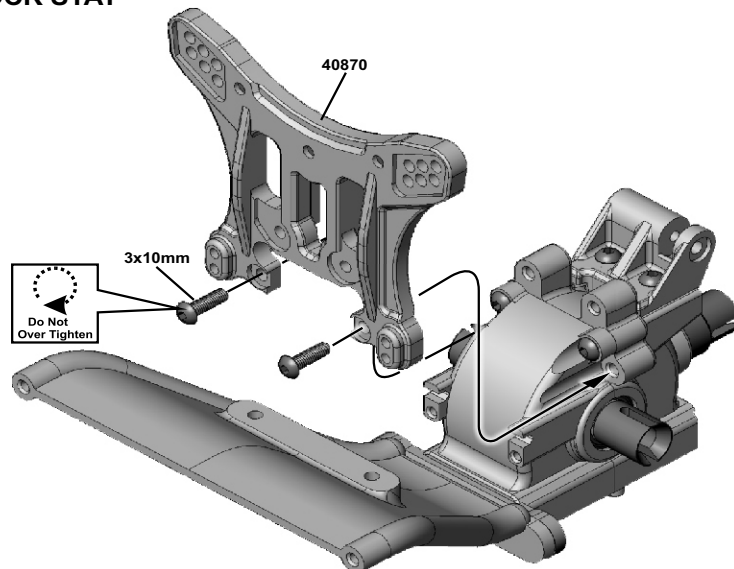
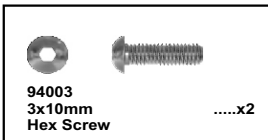


3x12mm

## 20 ASSEMBLY OF THE REAR GEAR CASE

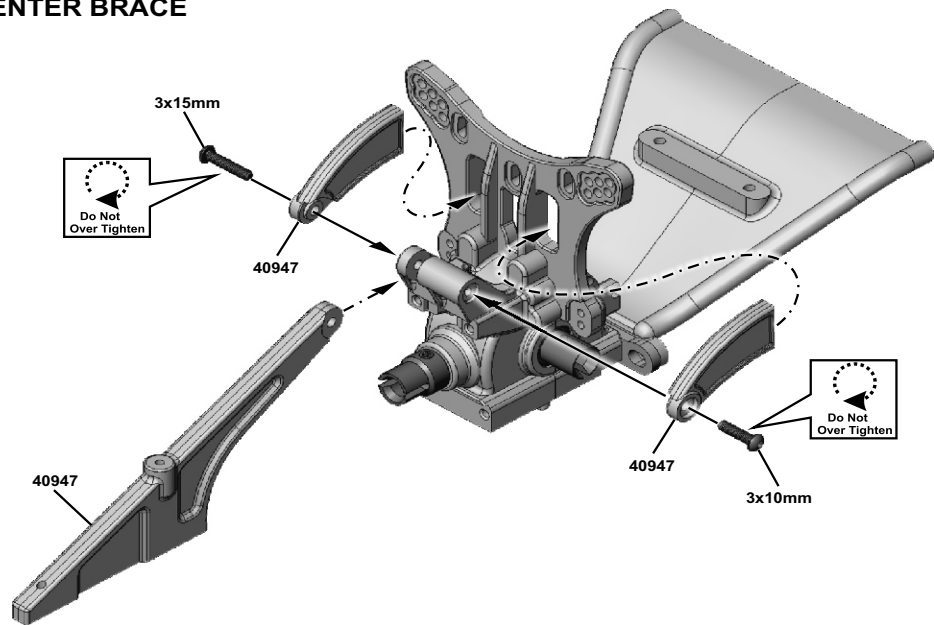
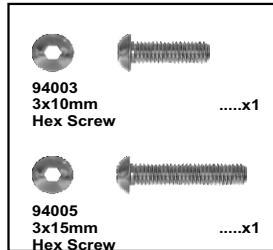


## 21 ASSEMBLY OF THE REAR SHOCK STAY

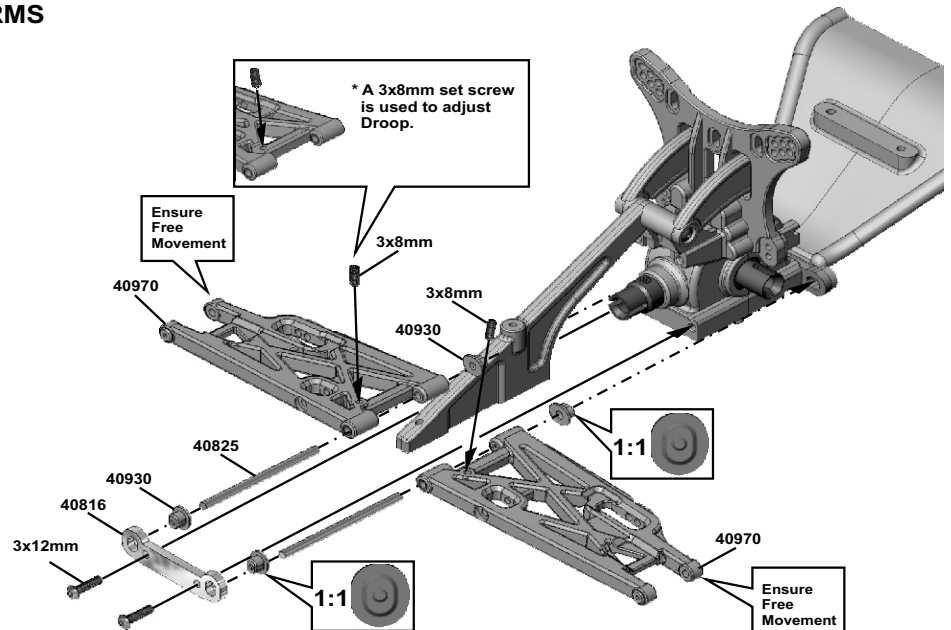
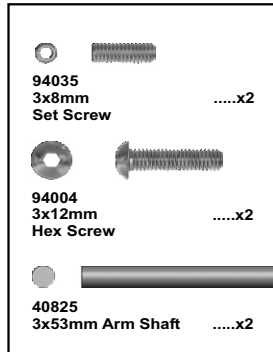


3x10mm

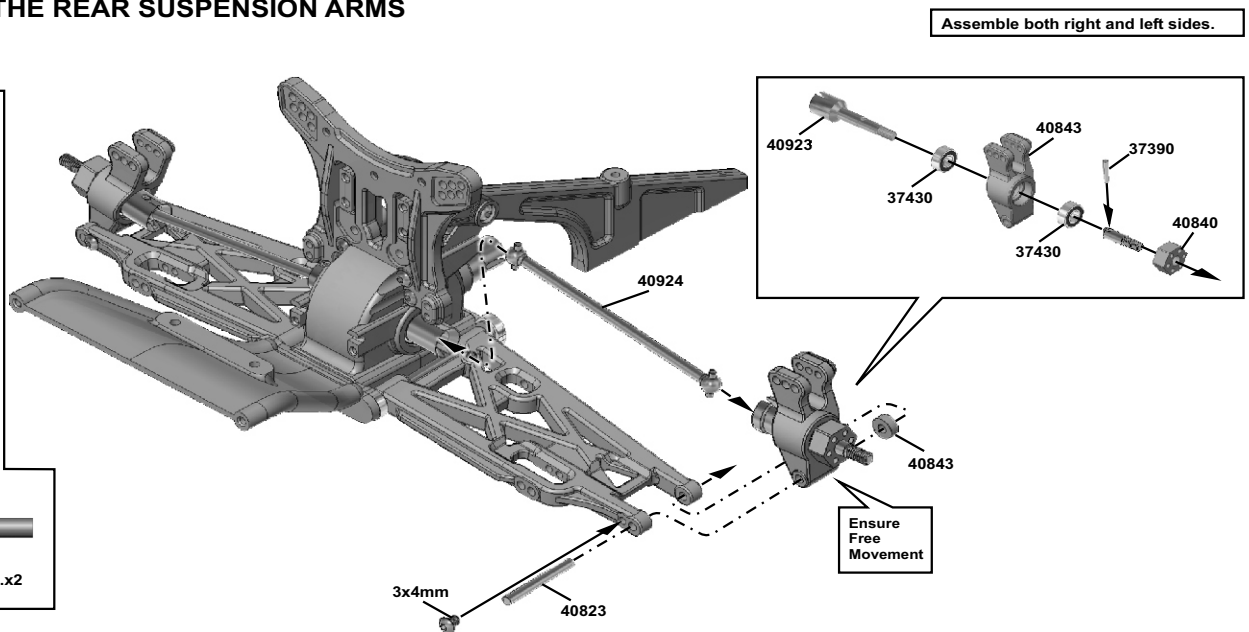
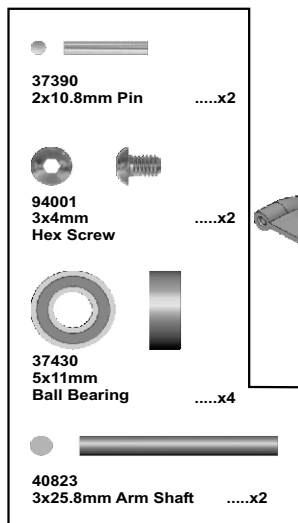
## 22 ASSEMBLY OF THE REAR CENTER BRACE



## 23 ASSEMBLY OF THE REAR LOWER ARMS



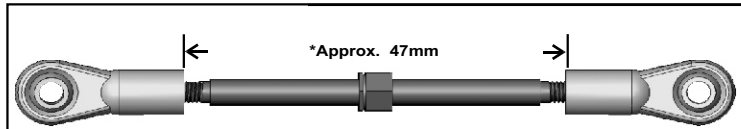
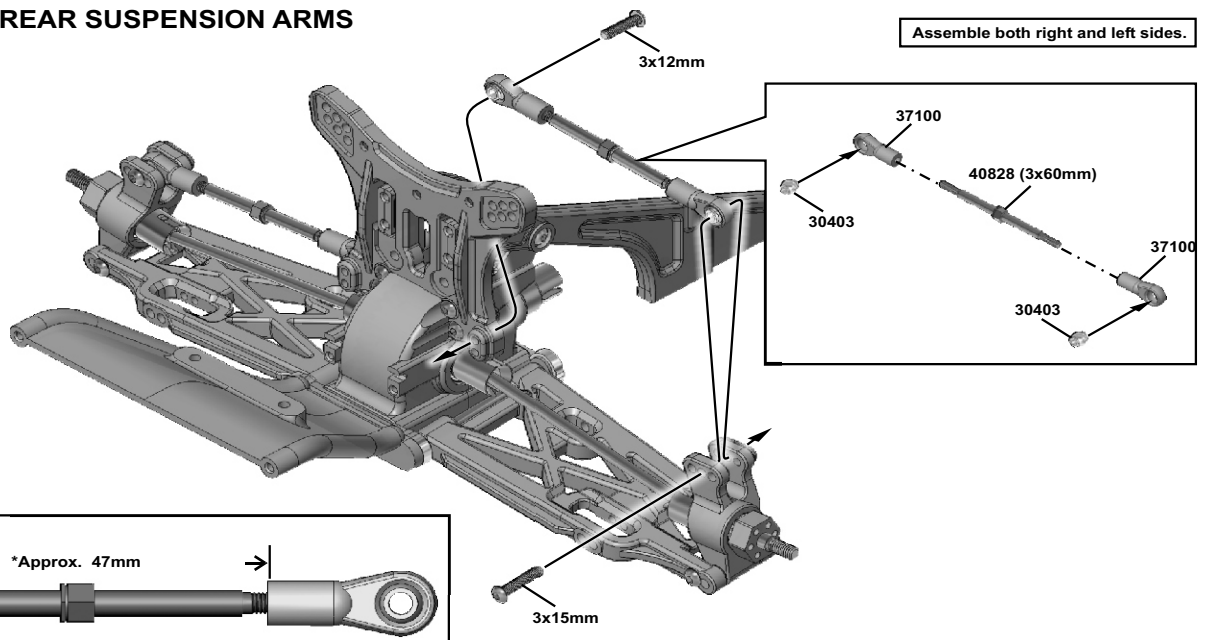
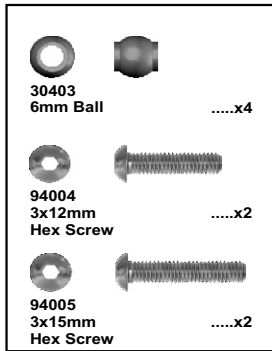
## 24 ASSEMBLY OF THE REAR SUSPENSION ARMS





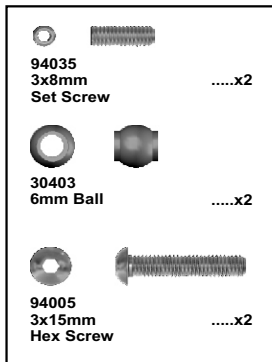
## 25 ASSEMBLY OF THE REAR SUSPENSION ARMS

Assemble both right and left sides.

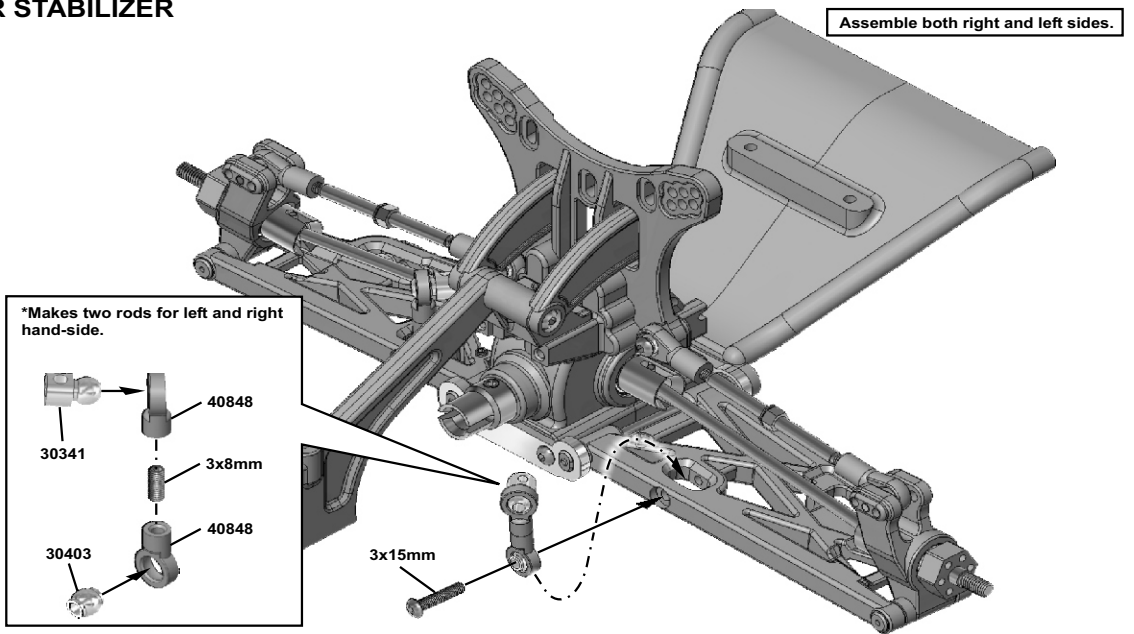
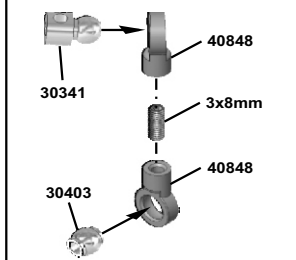


## 26 ASSEMBLY OF THE REAR STABILIZER

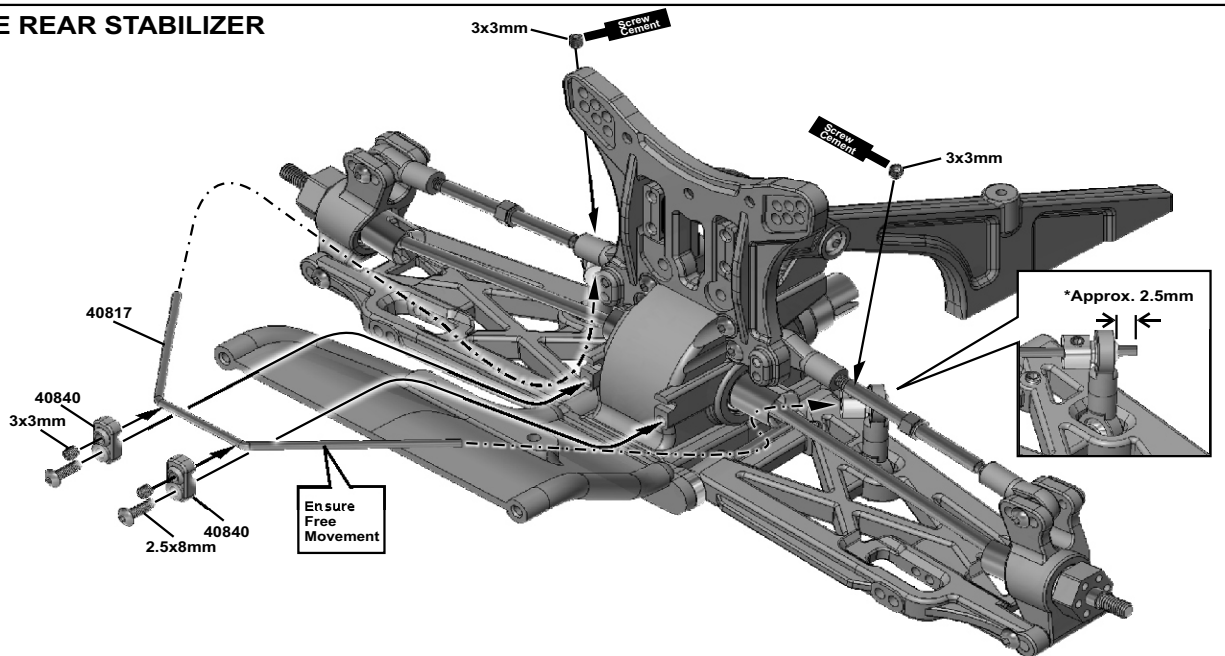
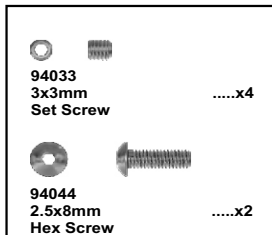
Assemble both right and left sides.



\*Makes two rods for left and right hand-side.



## 27 ASSEMBLY OF THE REAR STABILIZER

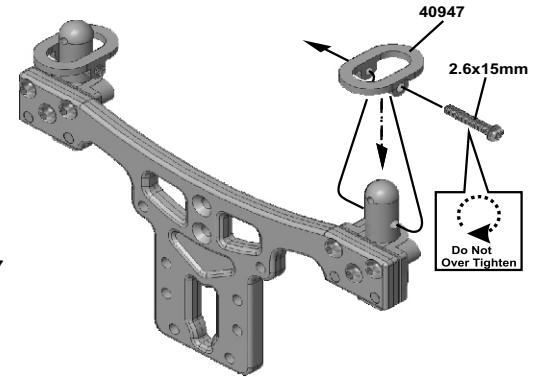
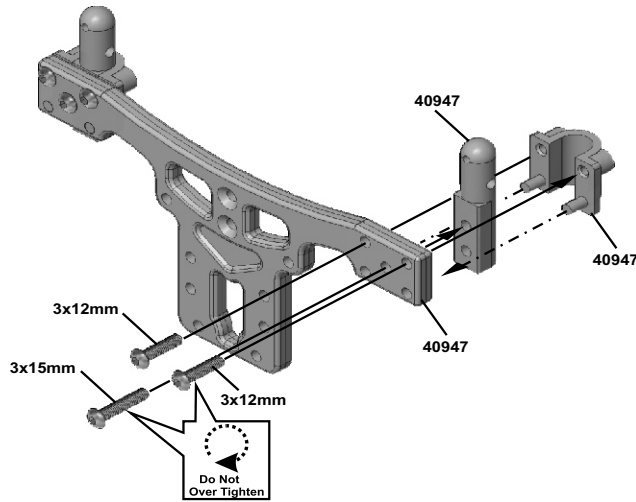
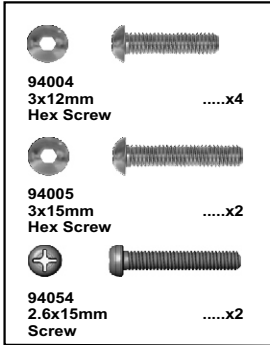


## 28 ASSEMBLY OF THE REAR BODY POST

Assemble both right and left sides.

Step 1

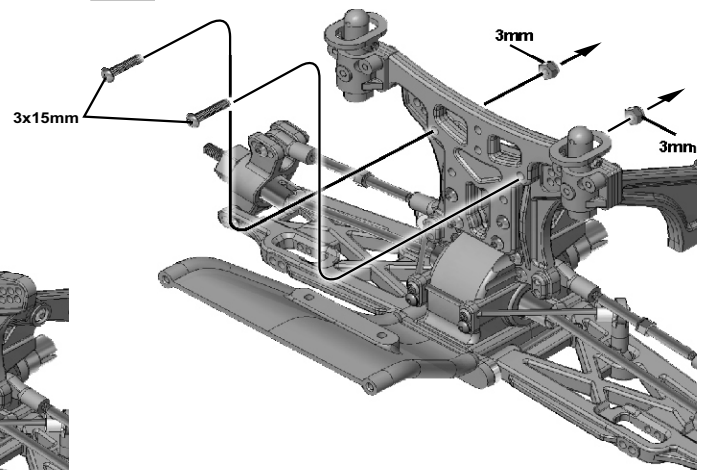
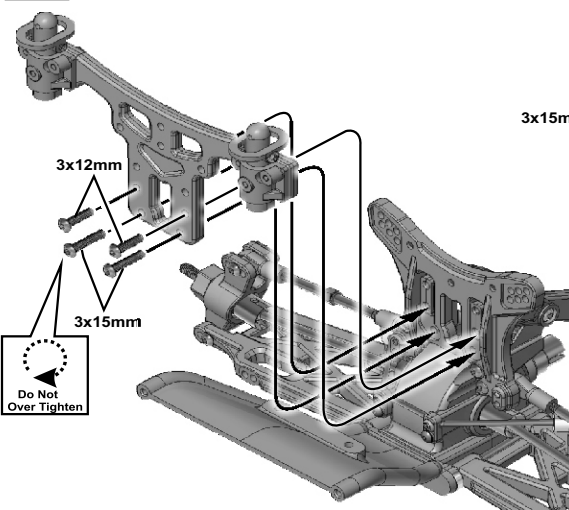
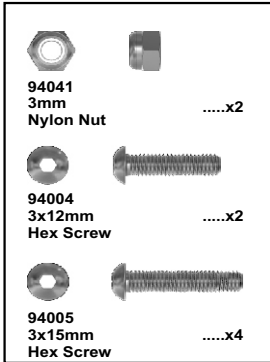
Step 2



## 29 ASSEMBLY OF THE REAR BODY STAY ONTO REAR GEAR CASE

Step 1

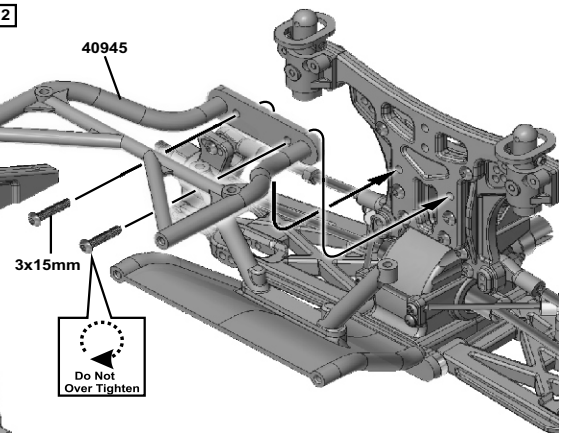
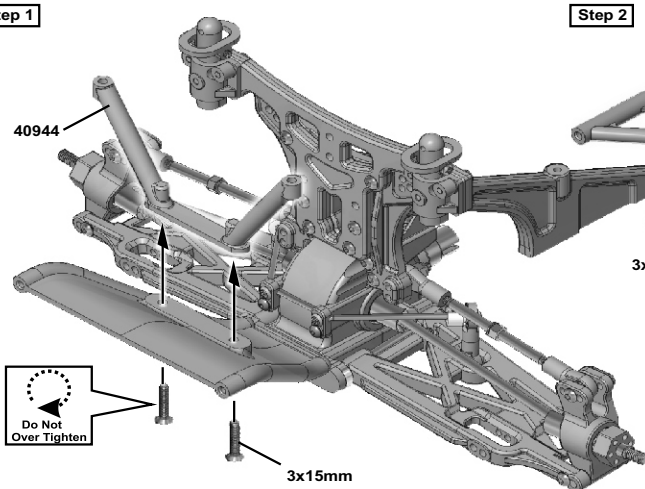
Step 2



## 30 ASSEMBLY OF THE REAR BUMPER

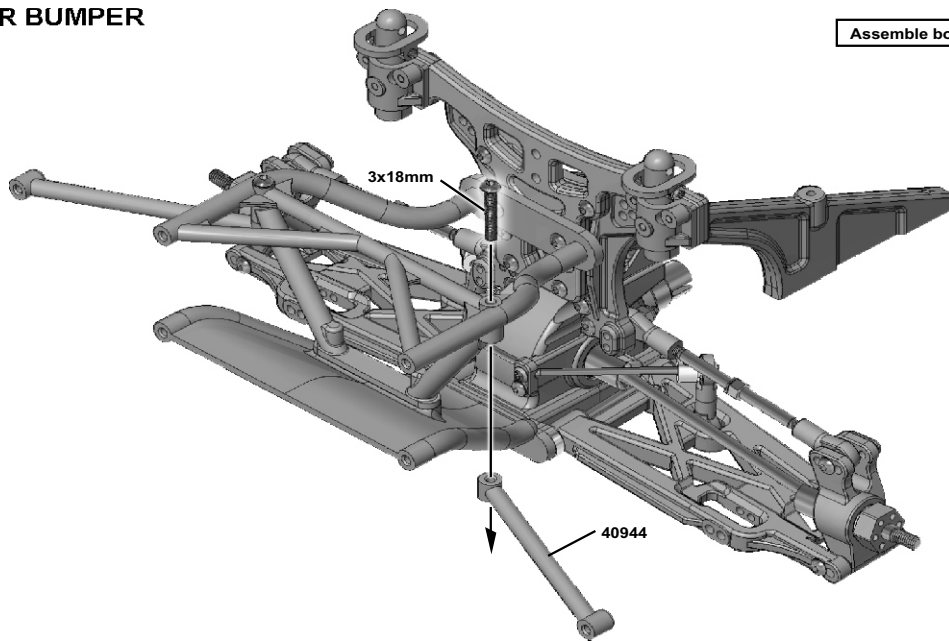
Step 1

Step 2



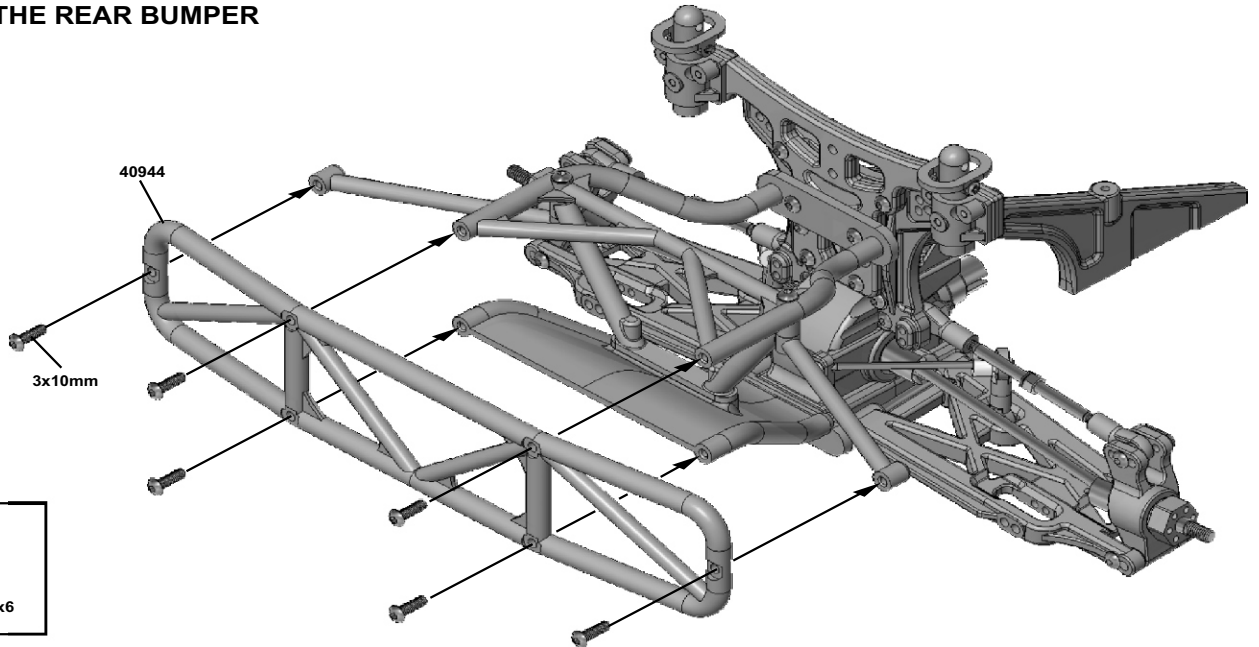
### 31 ASSEMBLY OF THE REAR BUMPER

Assemble both right and left sides.



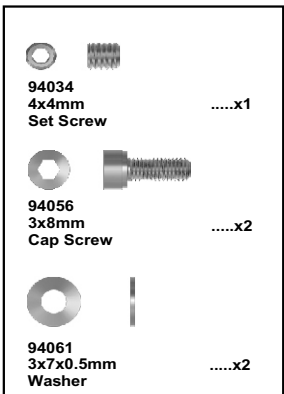
94006  
3x18mm  
Hex Hex Screw .....x2

### 32 ASSEMBLY OF THE REAR BUMPER

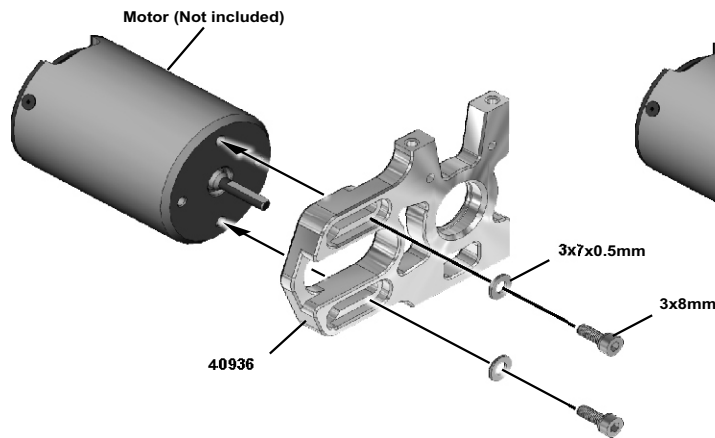


94003  
3x10mm  
Hex Hex Screw .....x6

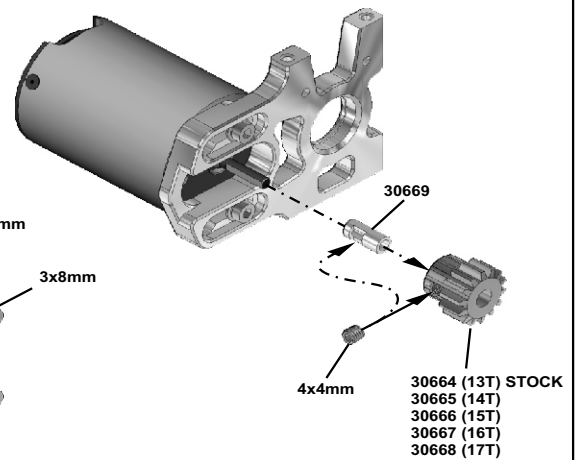
### 33 MOTOR INSTALL



Step 1

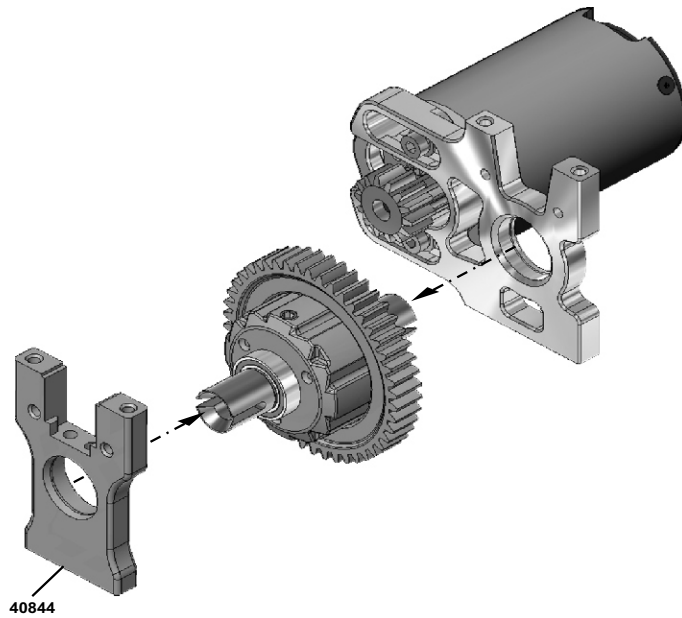


Step 2

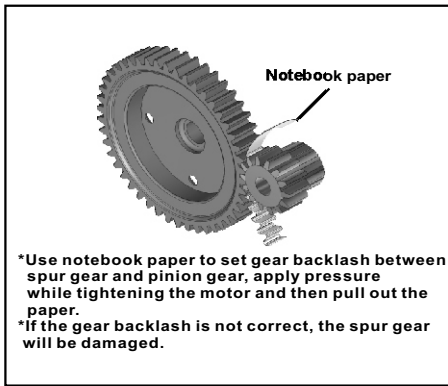


30664 (13T) STOCK  
30665 (14T)  
30666 (15T)  
30667 (16T)  
30668 (17T)

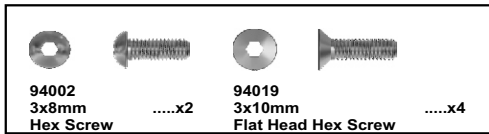
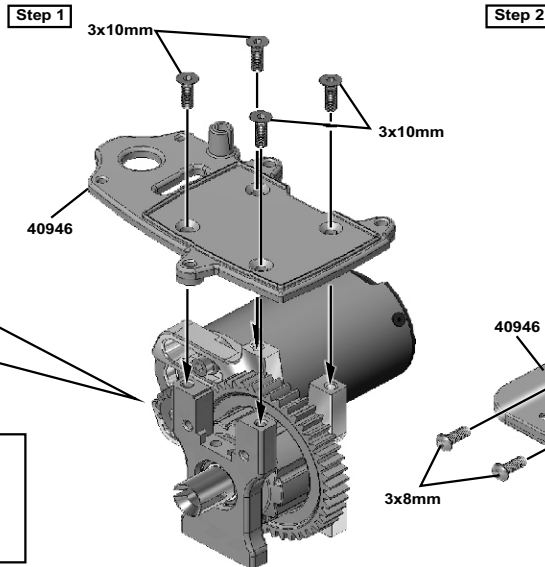
### 34 ASSEMBLY OF THE MOTOR MOUNT



### 35 ASSEMBLY OF THE CENTER DIFF. PLATE

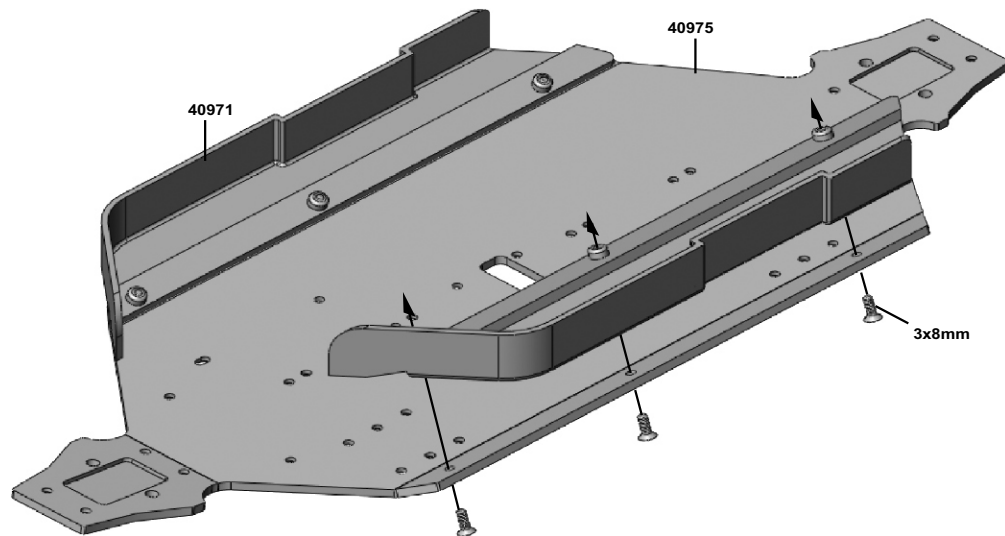


\*Use notebook paper to set gear backlash between spur gear and pinion gear, apply pressure while tightening the motor and then pull out the paper.  
\*If the gear backlash is not correct, the spur gear will be damaged.

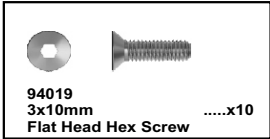
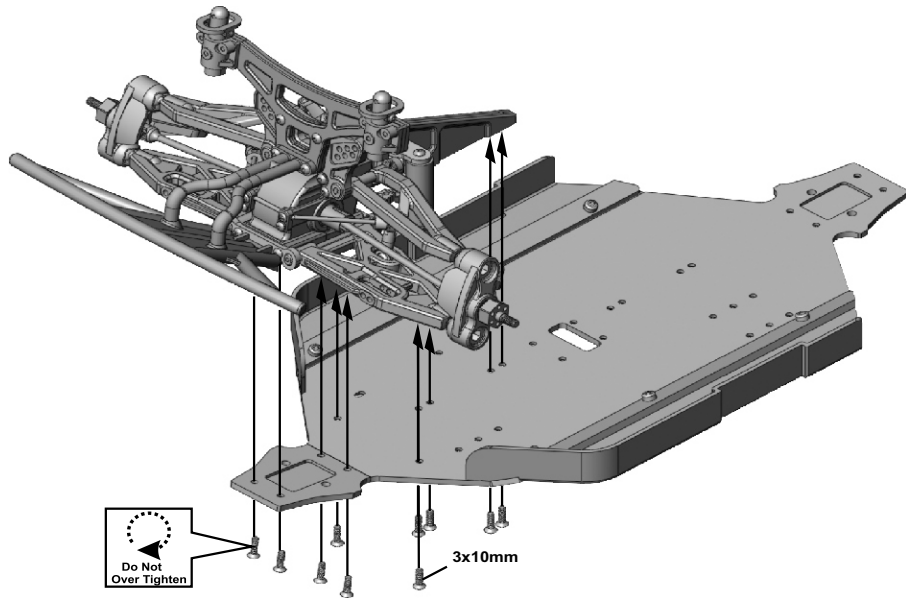


### 36 ASSEMBLY OF THE STONE GUARD

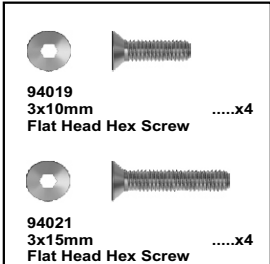
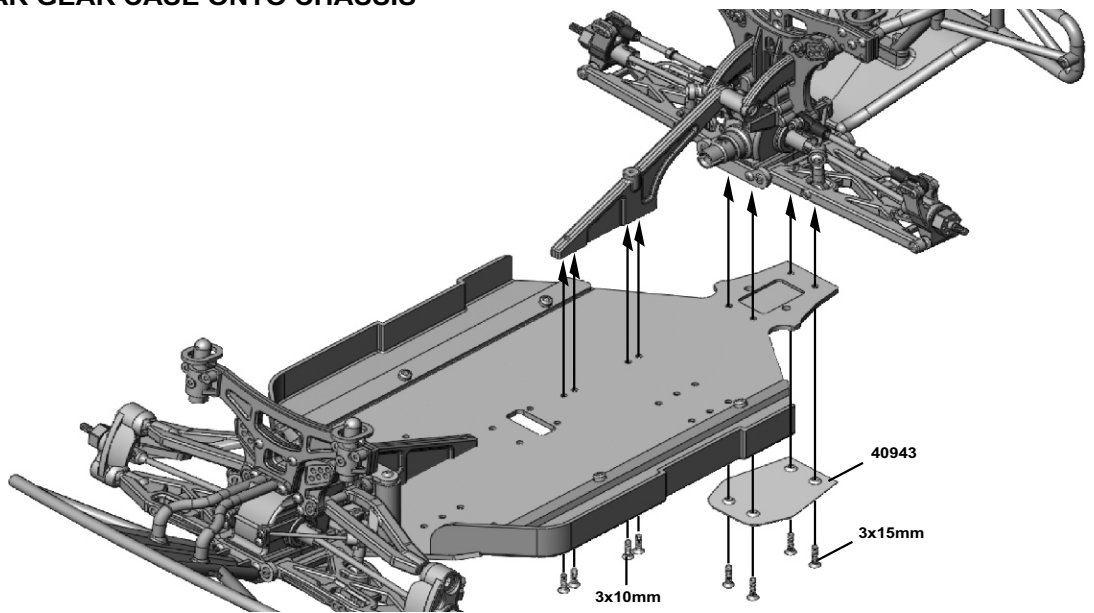
Assemble both right and left sides.



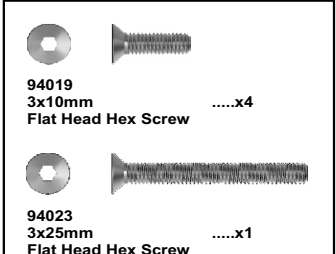
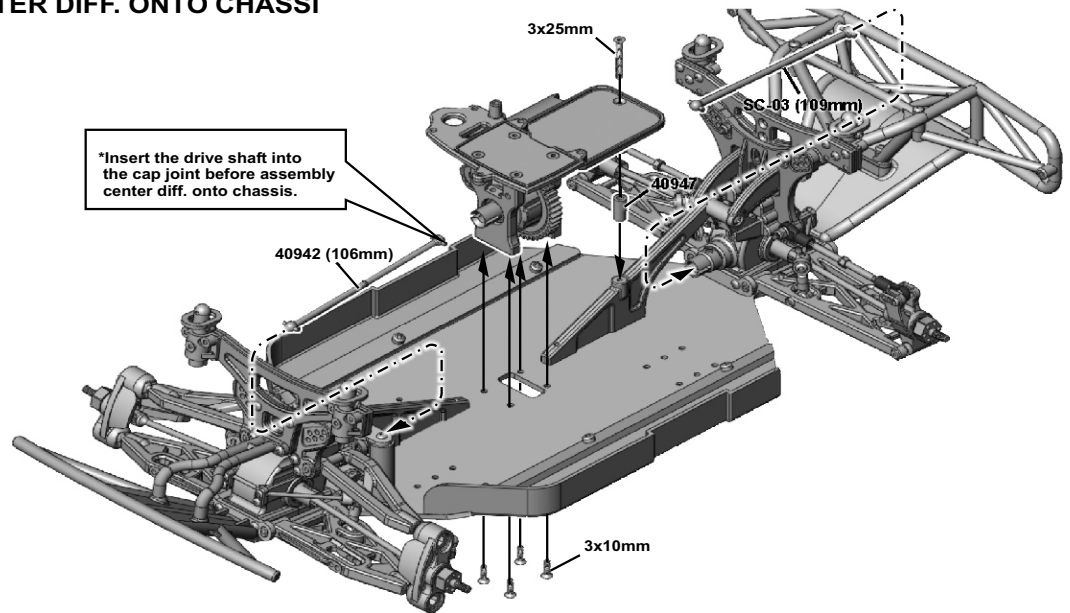
### 37 ASSEMBLY OF THE FRONT GEAR CASE ONTO CHASSIS



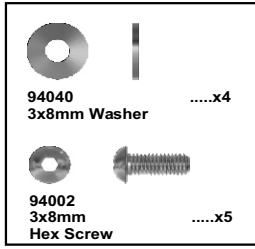
### 38 ASSEMBLY OF THE REAR GEAR CASE ONTO CHASSIS



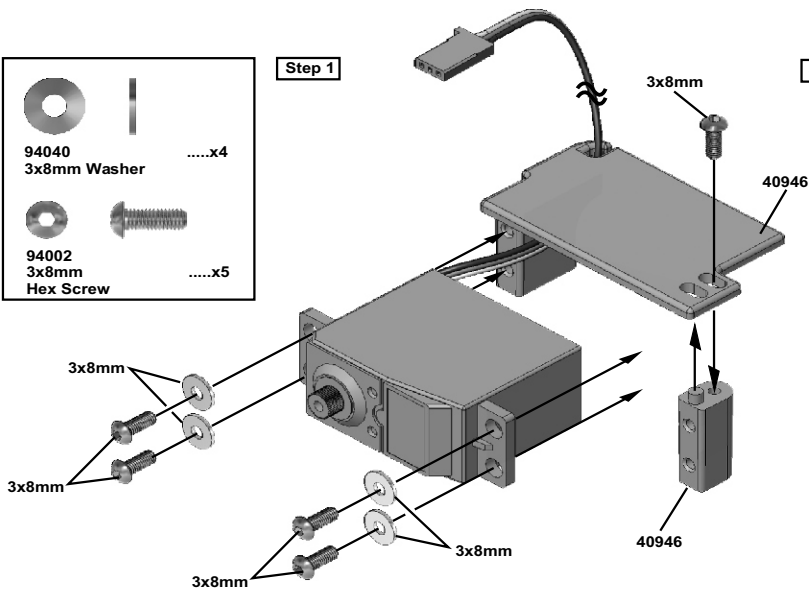
### 39 ASSEMBLY OF THE CENTER DIFF. ONTO CHASSIS



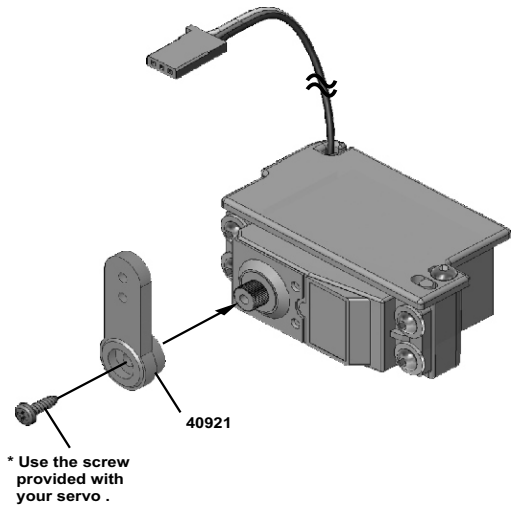
## 40 ASSEMBLY OF THE FRONT STEERING SERVO



Step 1



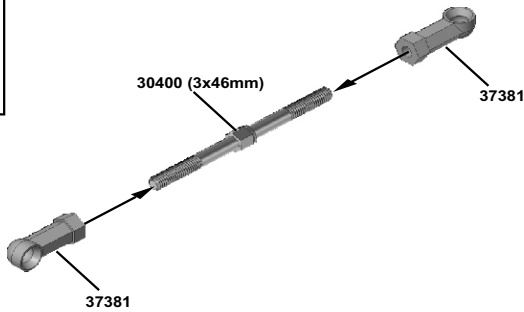
Step 2



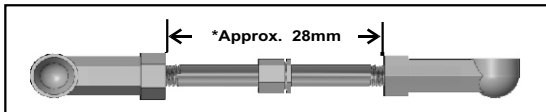
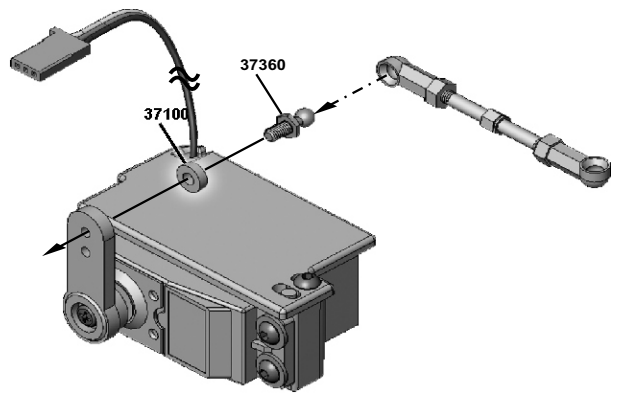
## 41 ASSEMBLY OF THE STEERING TIE-ROD



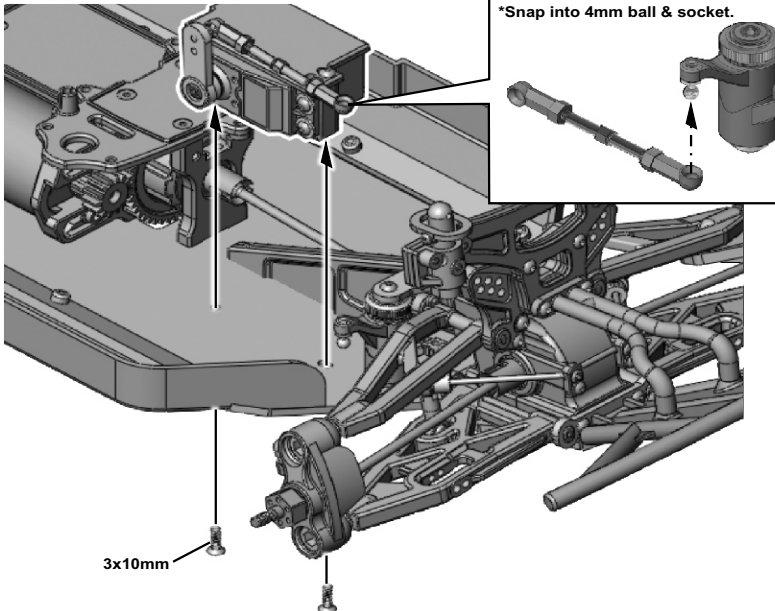
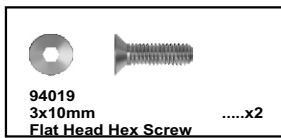
Step 1



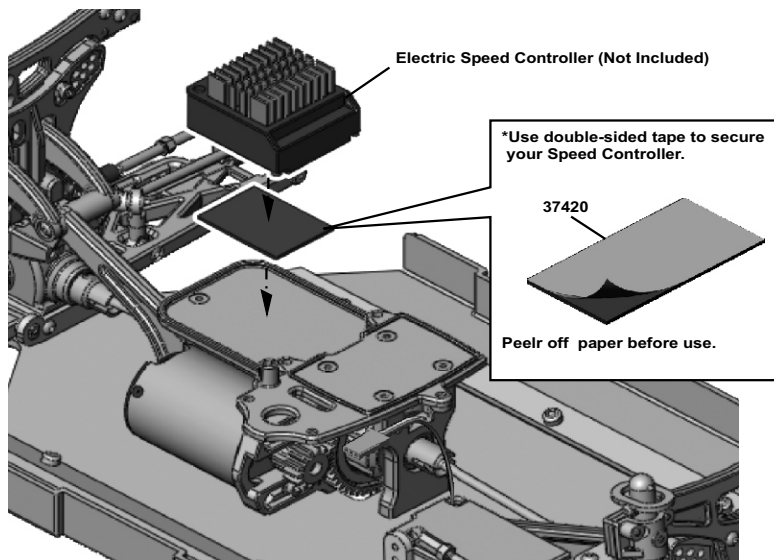
Step 2



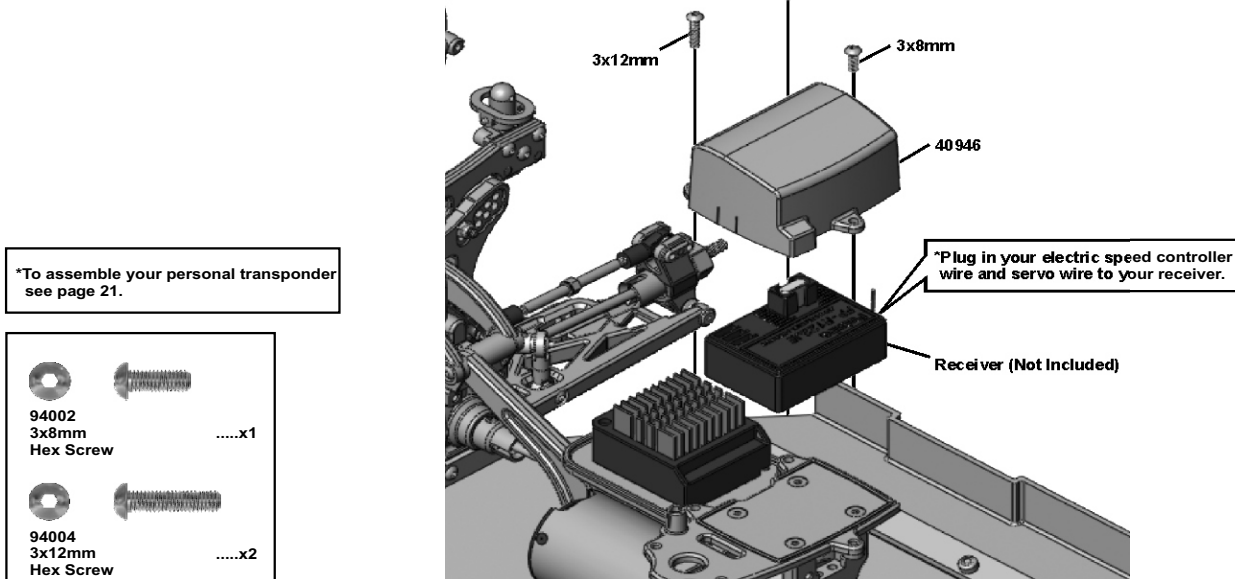
## 42 ASSEMBLY OF THE STEERING SERVO ONTO CHASSIS



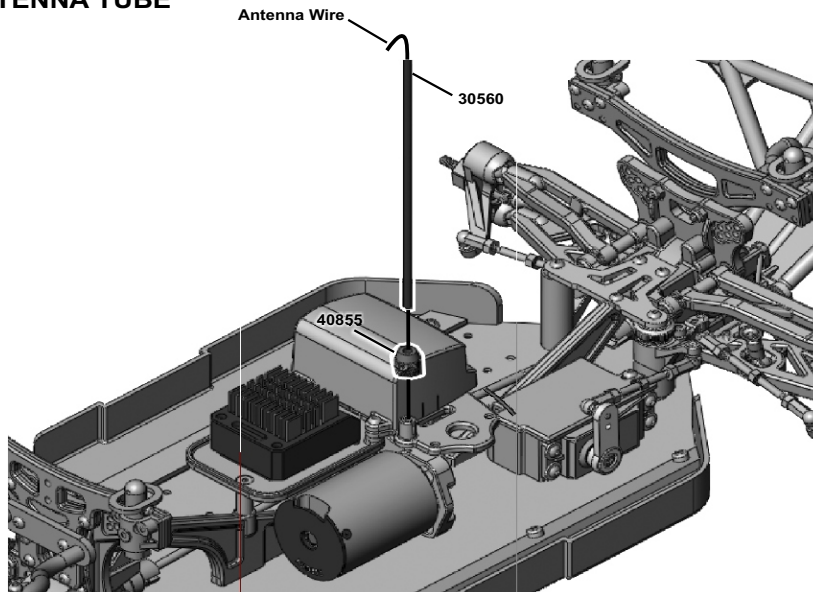
#### 43 ASSEMBLY OF THE ELECTRIC SPEED CONTROLLER ONTO CONTROLLER MOUNT



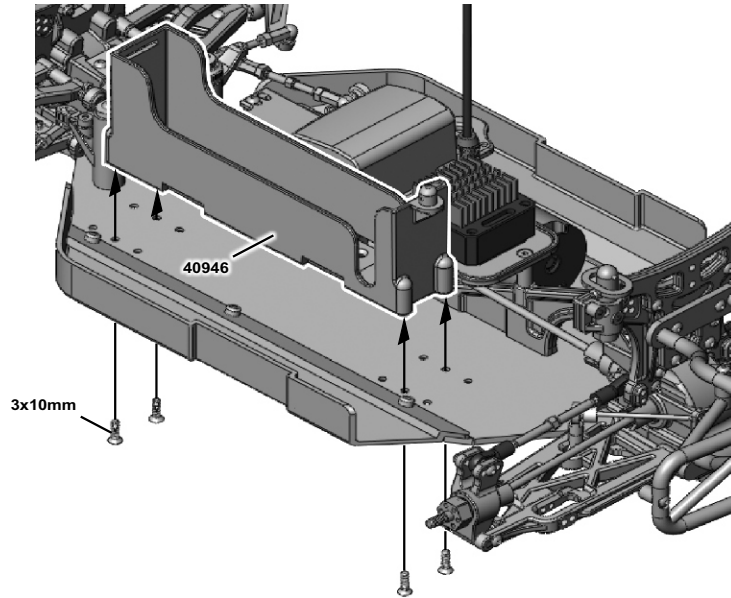
#### 44 ASSEMBLY OF THE RECEIVER INTO RADIO CASE



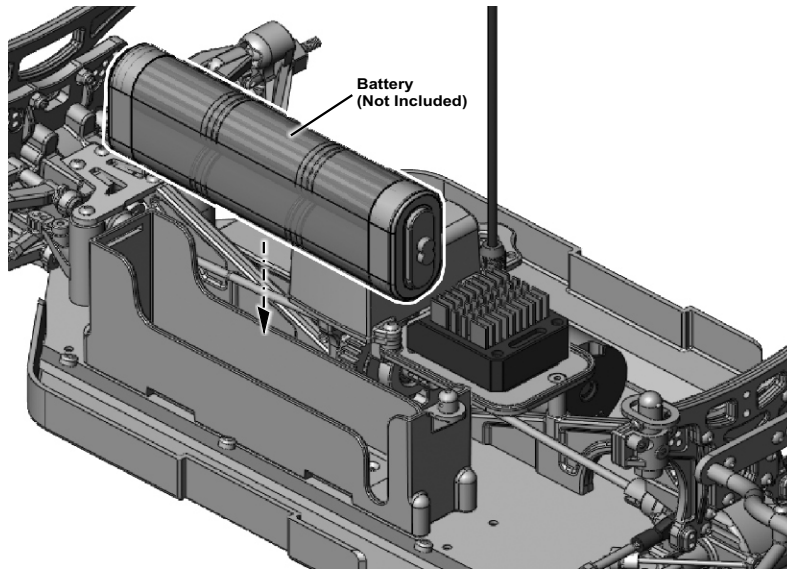
#### 45 ASSEMBLY OF THE ANTENNA TUBE



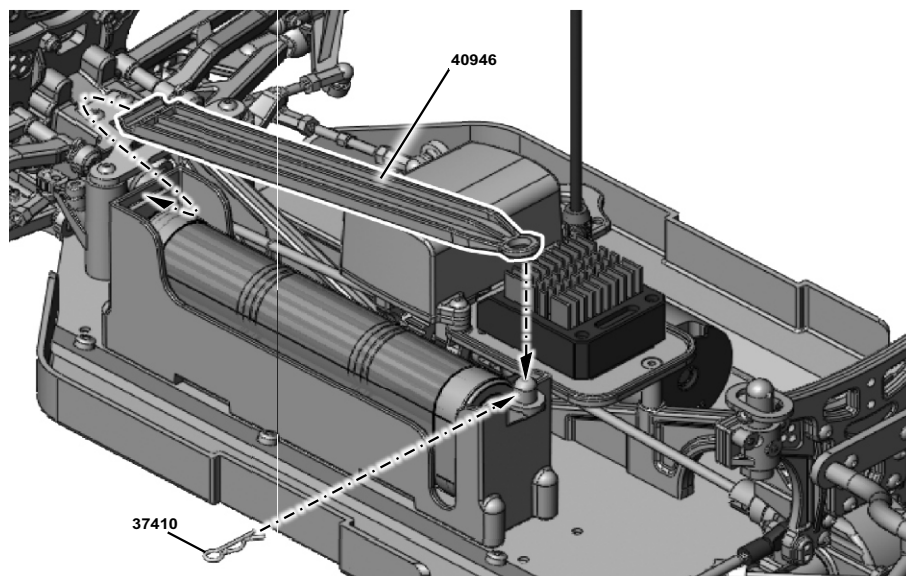
## 46 ASSEMBLY OF THE BATTERY CASE ONTO CHASSIS



## 47 BATTERY INSTALL

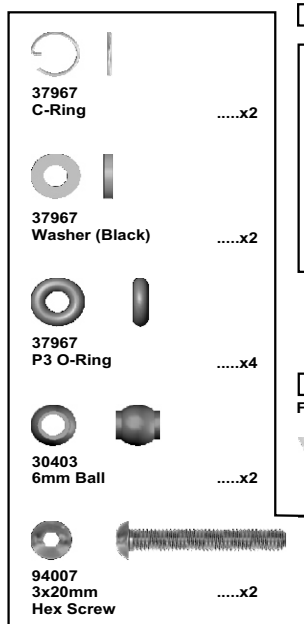


## 48 ASSEMBLY OF BATTERY SECURE PLATE



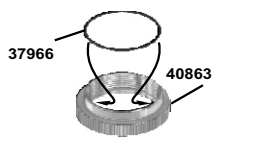


## 49 ASSEMBLY OF THE FRONT SHOCKS \*Make 2 sets for front

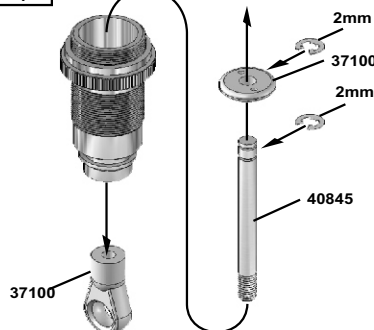


### Step 1

Fit the o-ring into groove before assembly



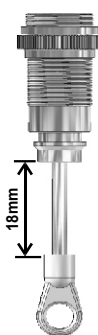
### Step 2



### CORRECT SHOCK ASSEMBLY

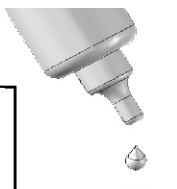
Carefully screw the shock shaft into the bottom of the plastic ball and until the distance between the ball and the shock body is 18mm for the front.

*Not: Do not over tighten as the plastic will strip.*

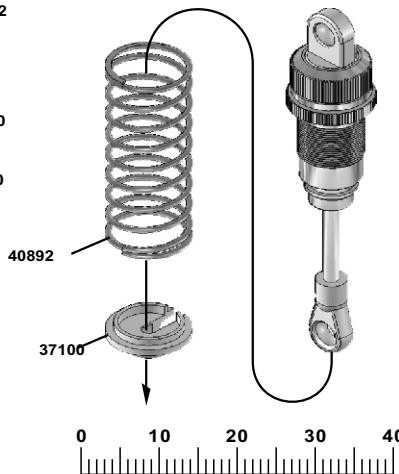


### Step 3

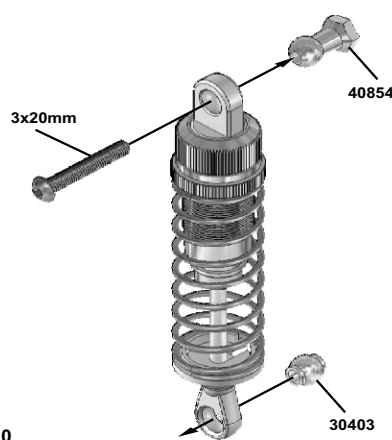
Fill the shocks with oil #50



### Step 4

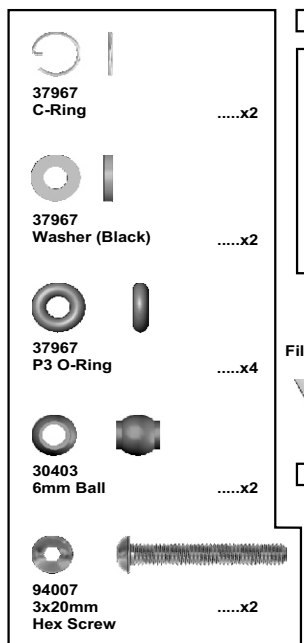


### Step 5



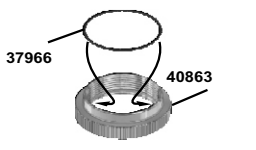
1. Pull down piston and pour oil into shock cylinder.
2. To remove air bubbles by slowly moving piston up and down.
3. Pull down piston, attach pressure top and shock oil overflow with rag.

## 50 ASSEMBLY OF THE REAR SHOCKS \*Make 2 sets for rear

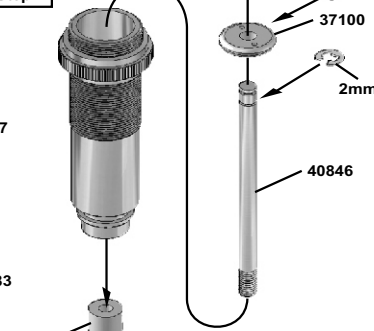


### Step 1

Fit the o-ring into groove before assembly



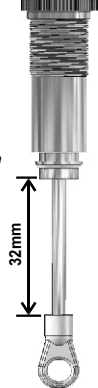
### Step 2



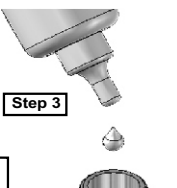
### CORRECT SHOCK ASSEMBLY

Carefully screw the shock shaft into the bottom of the plastic ball and until the distance between the ball and the shock body is 32mm for the rear.

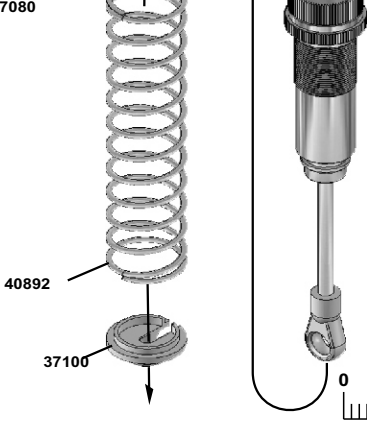
*Note: Do not over tighten as the plastic will strip.*



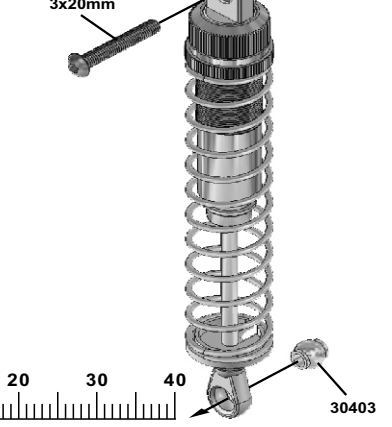
Fill the shocks with oil #35



### Step 4

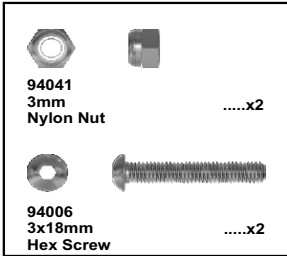
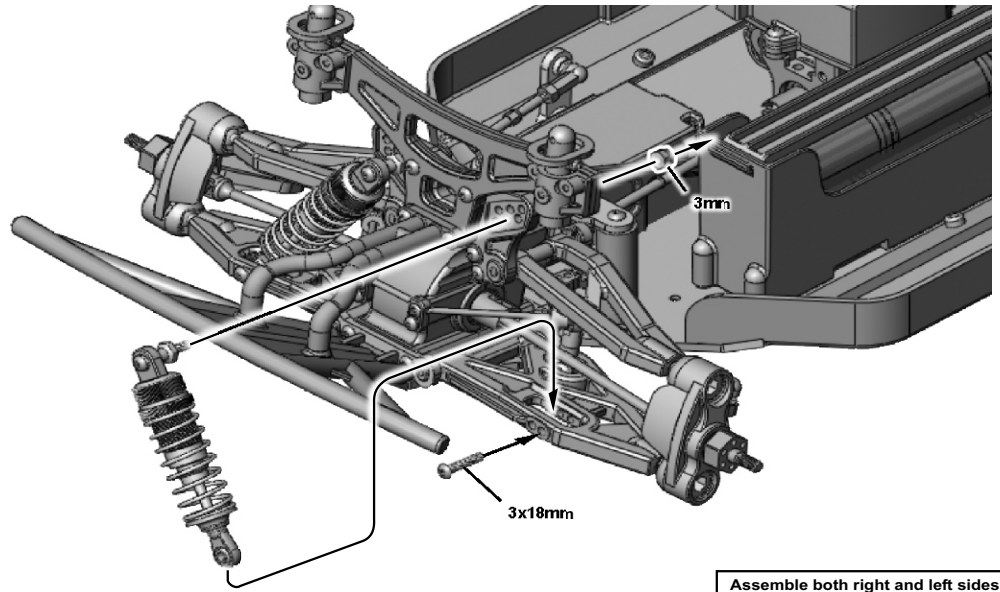


### Step 5



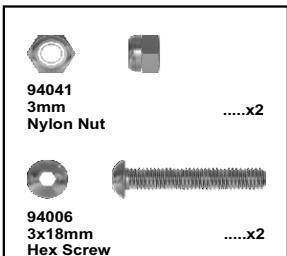
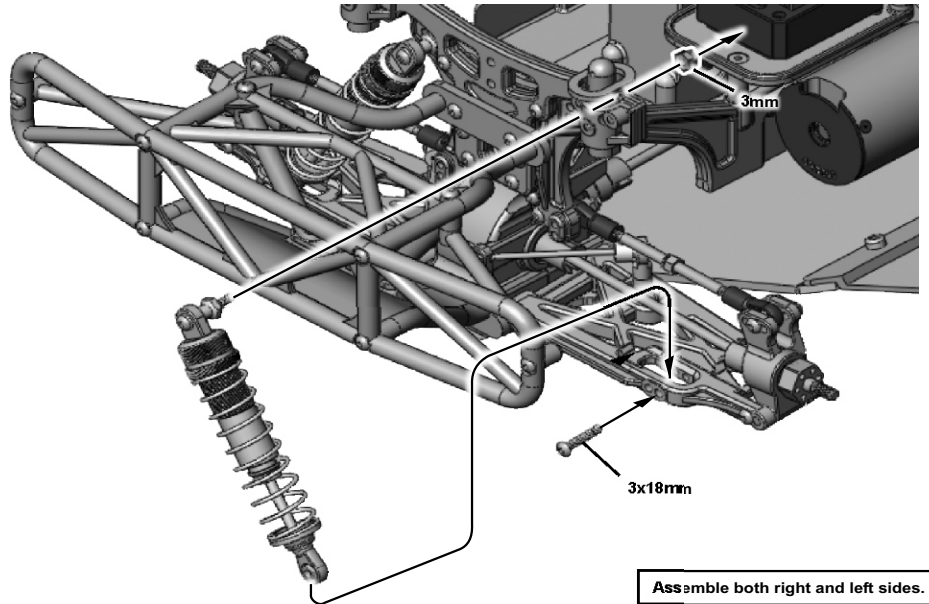
1. Pull down piston and pour oil into shock cylinder.
2. To remove air bubbles by slowly moving piston up and down.
3. Pull down piston, attach pressure top and shock oil overflow with rag.

### 51 ASSEMBLY OF THE FRONT SHOCK ABSORBER



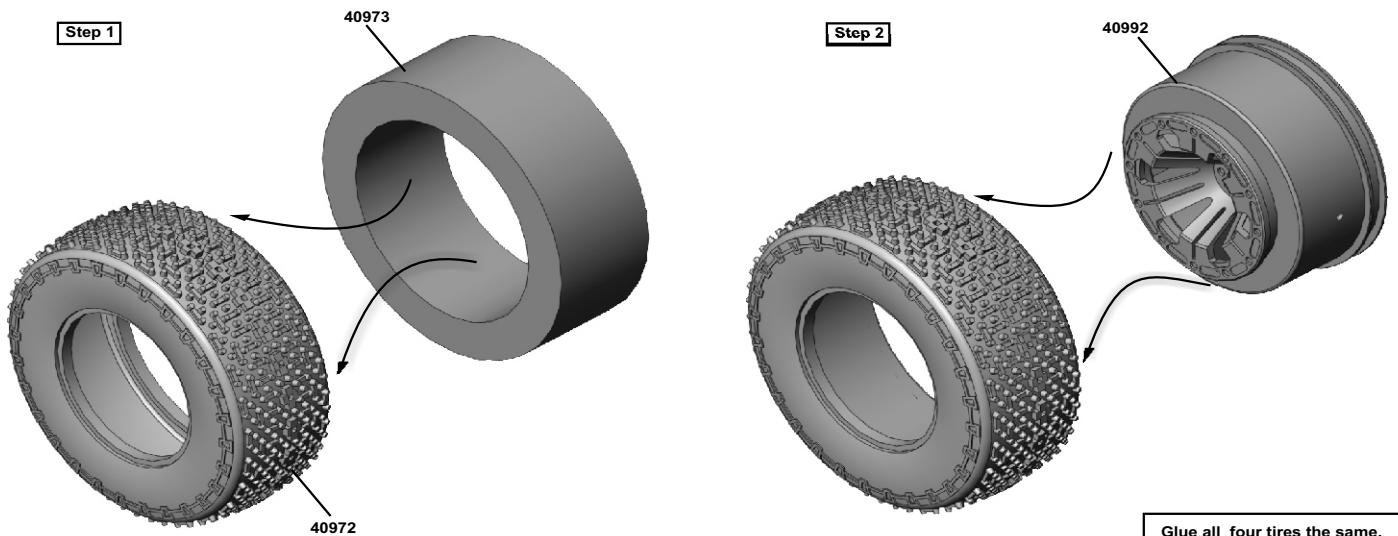
Assemble both right and left sides.

### 52 ASSEMBLY OF THE REAR SHOCK ABSORBER



Assemble both right and left sides.

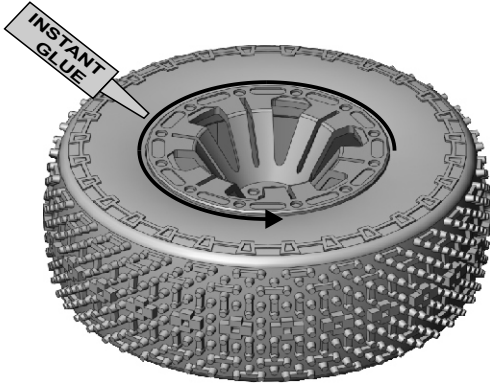
### 53 ASSEMBLY OF THE TIRES AND WHEELS



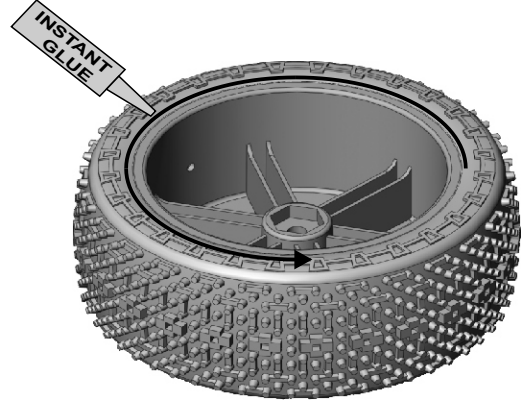
## 54 ASSEMBLY OF THE TIRES AND WHEELS

Use " Instant glue or CA " and draw a line a round the rim where it attaches the tire . When it is dry glue the other side of the rim.  
Repeat the step and ensure the rim and tire are fully glued.

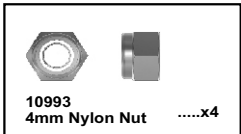
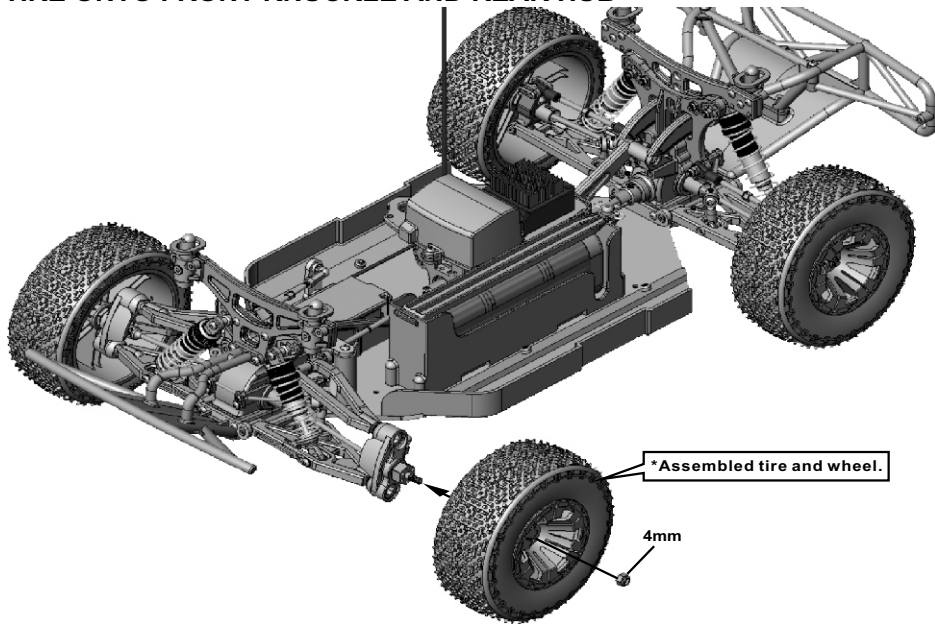
Step 1



Step 2

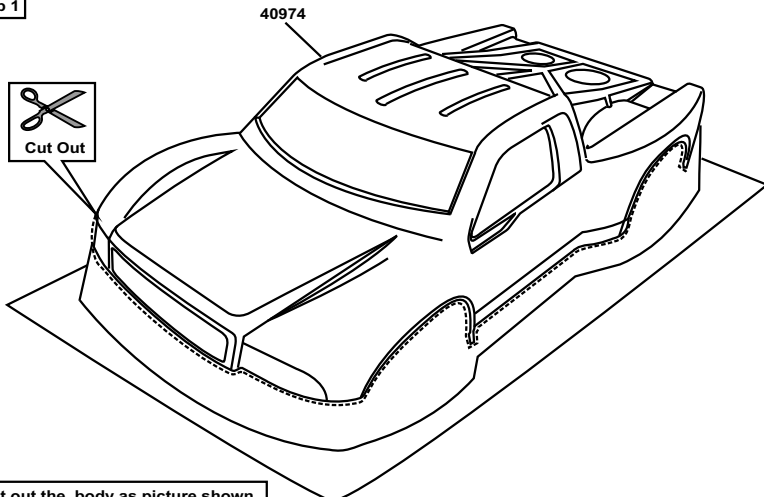


## 55 ASSEMBLY OF THE TIRE ONTO FRONT KNUCKLE AND REAR HUB

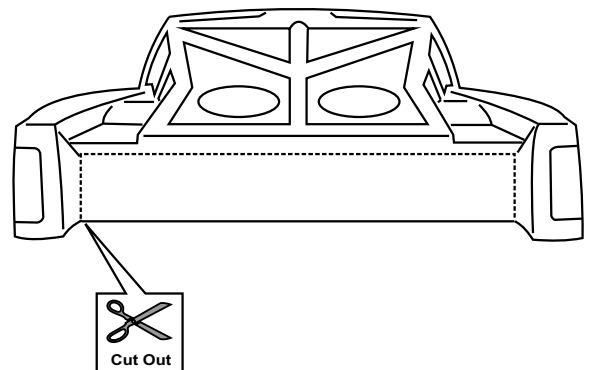


## 56 MOUNTING BODY

Step 1



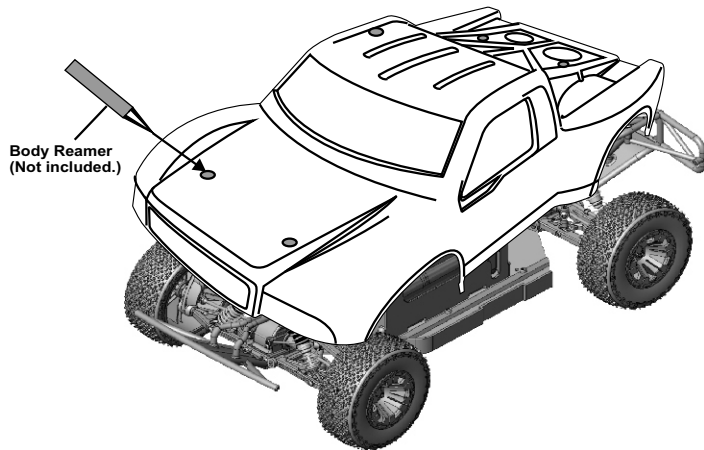
Step 2



## 57 ASSEMBLY OF THE BODY

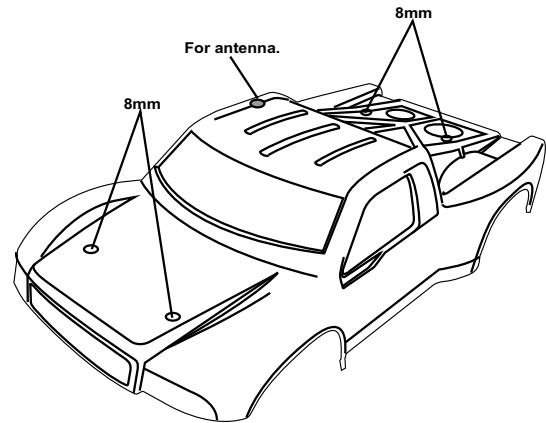
### Step 1

\*Before cutting and making holes in the body, put the unpainted body on the chassis to confirm the mounting position and location for the holes.



### Step 2

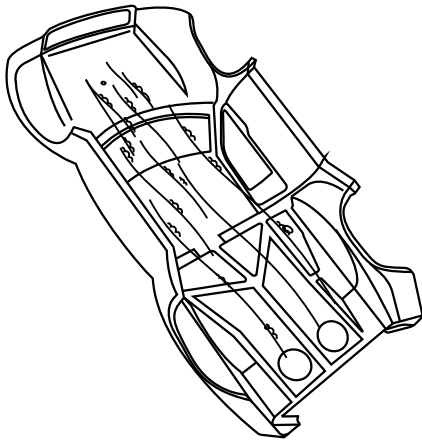
\*Use body reamer or drill to make two 8mm holes in the front and two 8mm holes in the rear.



## 58 BODY PAINTING

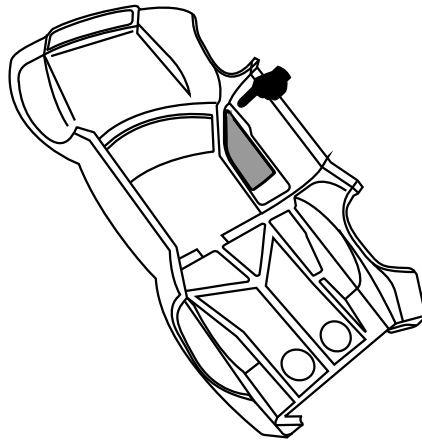
### Step 1

\*Use a neutral detergent to remove any dirt and oil.



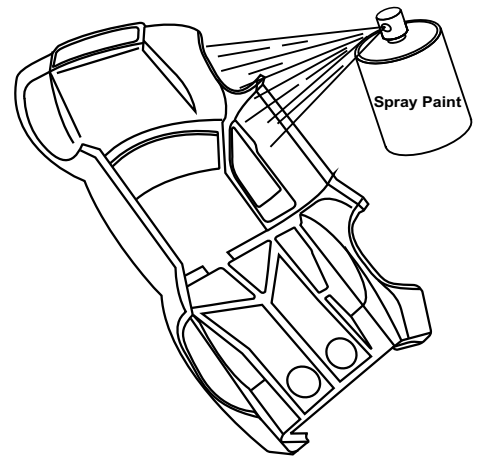
### Step 2

\*Mask the windows from the inside with masking tape.

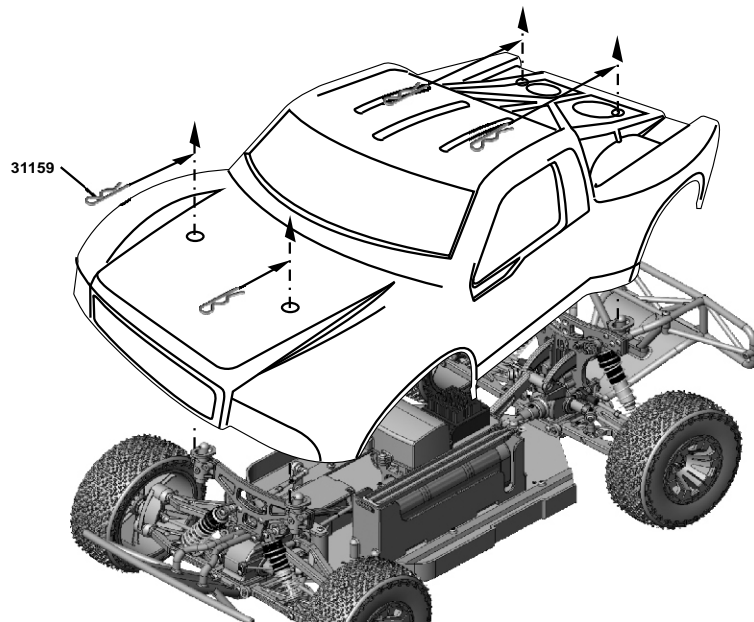


### Step 3

\*Paint the body with polycarbonate spray paints.



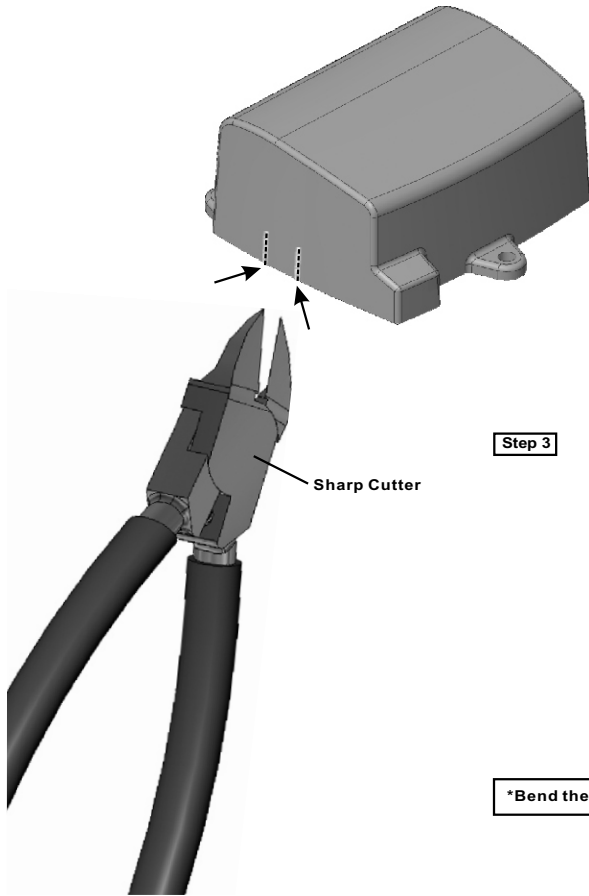
## 59 MOUNTING BODY



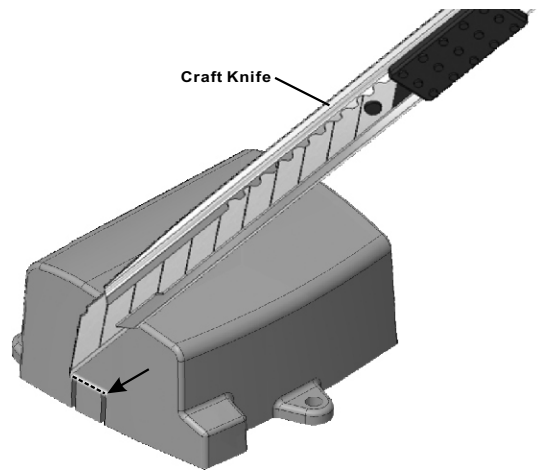
# ASSEMBLY OF THE PERSONAL TRANSPONDER

## CUT THE RADIO CASE

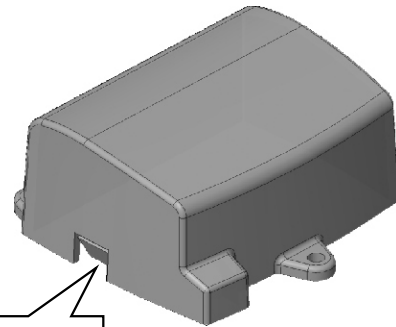
Step 1



Step 2

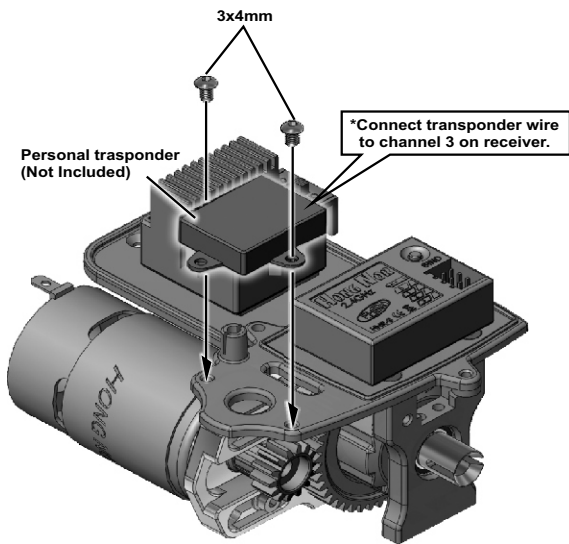


Step 3

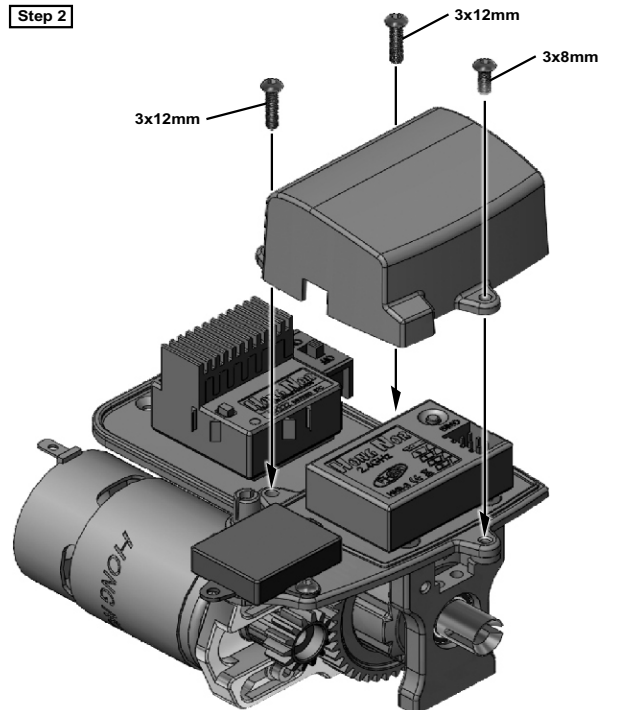





## ASSEMBLY OF THE TRANSPONDER

Step 1



Step 2



- |   |                              |         |
|---|------------------------------|---------|
|  | 94001<br>3x4mm<br>Hex Screw  | .....x2 |
|  | 94002<br>3x8mm<br>Hex Screw  | .....x1 |
|  | 94004<br>3x12mm<br>Hex Screw | .....x2 |



# NEXX 10SC Set-Up Sheet

Date: \_\_\_\_\_

Driver: \_\_\_\_\_

Track: \_\_\_\_\_ / \_\_\_\_\_

Air Temp: \_\_\_\_\_ 80F \_\_\_\_\_

Surface Dsc. \_\_\_\_\_ WATERED & DRY \_\_\_\_\_

Avg. Lap Time: \_\_\_\_\_ "

## Front Suspension

Shock Spring: \_\_\_\_\_ Gray \_\_\_\_\_

Shock Piston:   /   /

Shock Oil wt: \_\_\_\_\_

Shock Length: \_\_\_\_\_ mm  
(Center to Center)

Toe-IN: \_\_\_\_\_

Toe-Out: \_\_\_\_\_

Front Ride Height: \_\_\_\_\_

Sway Bar: \_\_\_\_\_ None \_\_\_\_\_

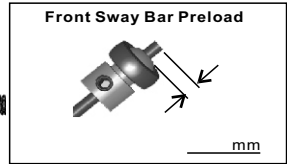
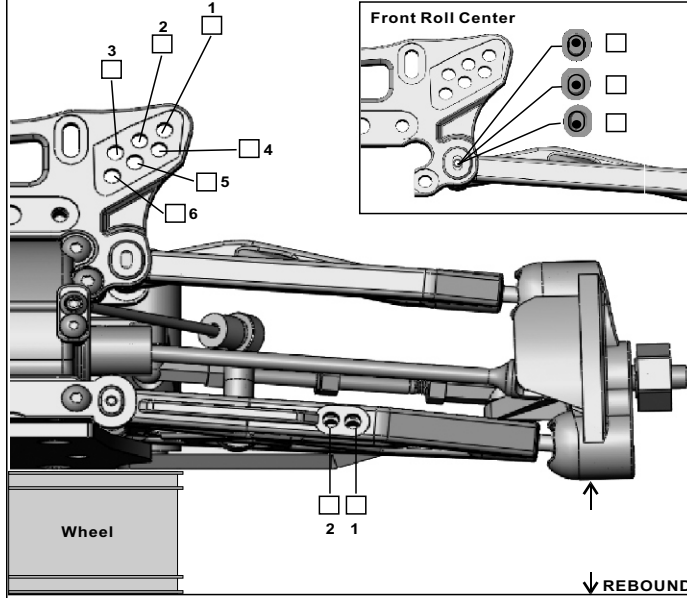
Camber: Neg: \_\_\_\_\_

Pos: \_\_\_\_\_

Caster Angle:



F/F	<input type="checkbox"/>	<input type="checkbox"/>	<input type="checkbox"/>
F/R	<input type="checkbox"/>	<input type="checkbox"/>	<input type="checkbox"/>
(F/F)	<input type="checkbox"/>	22	21
(F/R)	<input type="checkbox"/>	23	22
<input type="checkbox"/>	<input type="checkbox"/>	24	23



Notes: \_\_\_\_\_

## Rear Suspension

Shock Spring: \_\_\_\_\_ Gray \_\_\_\_\_

Shock Piston:   /   /

Shock Oil wt: \_\_\_\_\_

Shock Length: \_\_\_\_\_ mm  
(Center to Center)

Rear Ride Height: \_\_\_\_\_ mm

Sway Bar: \_\_\_\_\_ None \_\_\_\_\_

Camber: Neg: \_\_\_\_\_

Pos: \_\_\_\_\_

Anti-Squat Plate



R/F



(Right = Left)

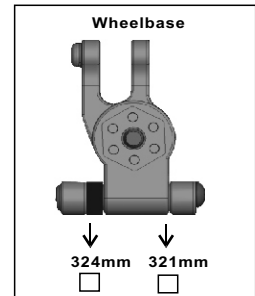
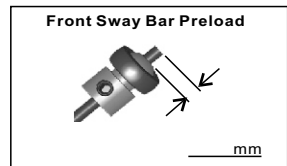
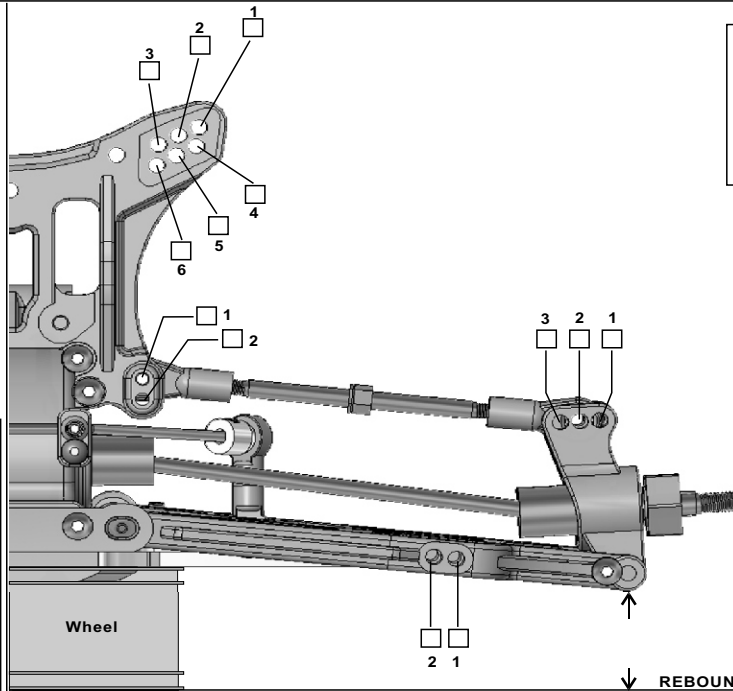
Rear Toe-In Plate



R/R



(Right = Left)



## Differential

Oil Type  SBCon  Grease

Front:STD-5K  \_\_\_\_\_K

Center:STD-7K  \_\_\_\_\_K

Rear:STD-1K  \_\_\_\_\_K

## Tires

Front:STD

Rear:STD

Foam:STD

Others: Brand: \_\_\_\_\_

Type: \_\_\_\_\_

Insert:  Foam

## ELECTRIC MOTOR

Type: Brush  Brushless

Turn: \_\_\_\_\_ Turn: \_\_\_\_\_

RPM: \_\_\_\_\_ KV: \_\_\_\_\_

Brand: \_\_\_\_\_

## ELECTRIC SPEED CONTROLLER

Brand: \_\_\_\_\_

Type: \_\_\_\_\_

## GEAR

Super Gear: 46 T

Motor Gear: \_\_\_\_\_ T

Gear Brand:STD  Other: \_\_\_\_\_





# NEXX 10SC Set-Up Sheet

Date: \_\_\_\_\_

Driver: \_\_\_\_\_

Track: \_\_\_\_\_ / \_\_\_\_\_

Air Temp: \_\_\_\_\_ 80F \_\_\_\_\_

Surface Dsc. \_\_\_\_\_ WATERED & DRY \_\_\_\_\_

Avg. Lap Time: \_\_\_\_\_ "

## Front Suspension

Shock Spring: \_\_\_\_\_ Gray \_\_\_\_\_

Shock Piston:   /   /

Shock Oil wt: \_\_\_\_\_

Shock Length: \_\_\_\_\_ mm  
(Center to Center)

Toe-IN: \_\_\_\_\_

Toe-Out: \_\_\_\_\_

Front Ride Height: \_\_\_\_\_

Sway Bar: \_\_\_\_\_ None \_\_\_\_\_

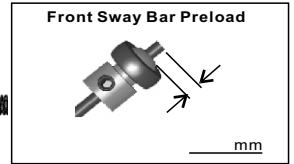
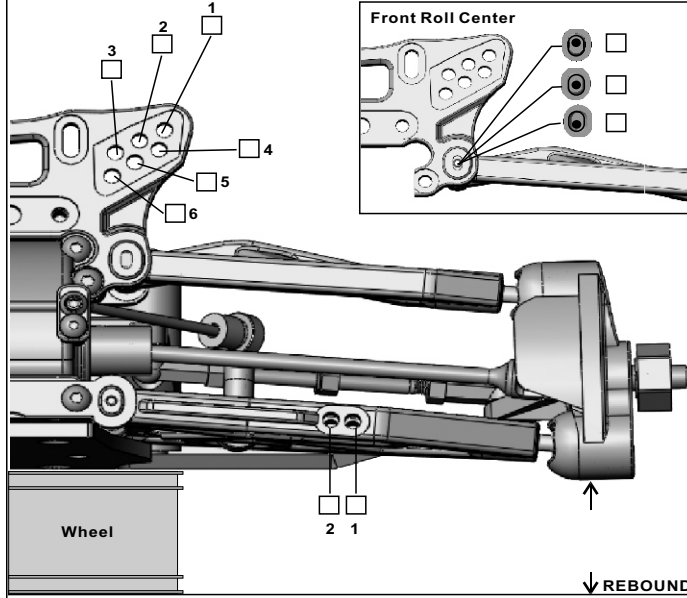
Camber: Neg: \_\_\_\_\_

Pos: \_\_\_\_\_

Caster Angle:



	F/F	<input type="checkbox"/>	<input type="checkbox"/>	<input type="checkbox"/>
(F/F)	<input type="checkbox"/>	22	21	20
(F/R)	<input type="checkbox"/>	23	22	21
	<input type="checkbox"/>	24	23	22



Notes: \_\_\_\_\_

## Rear Suspension

Shock Spring: \_\_\_\_\_ Gray \_\_\_\_\_

Shock Piston:   /   /

Shock Oil wt: \_\_\_\_\_

Shock Length: \_\_\_\_\_ mm  
(Center to Center)

Rear Ride Height: \_\_\_\_\_ mm

Sway Bar: \_\_\_\_\_ None \_\_\_\_\_

Camber: Neg: \_\_\_\_\_

Pos: \_\_\_\_\_

Anti-Squat Plate



R/F



(Right = Left)

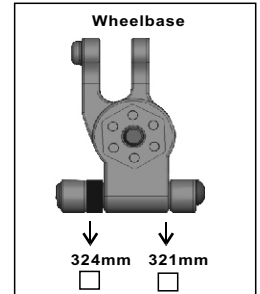
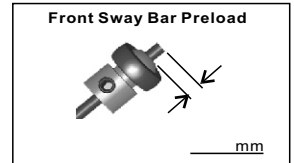
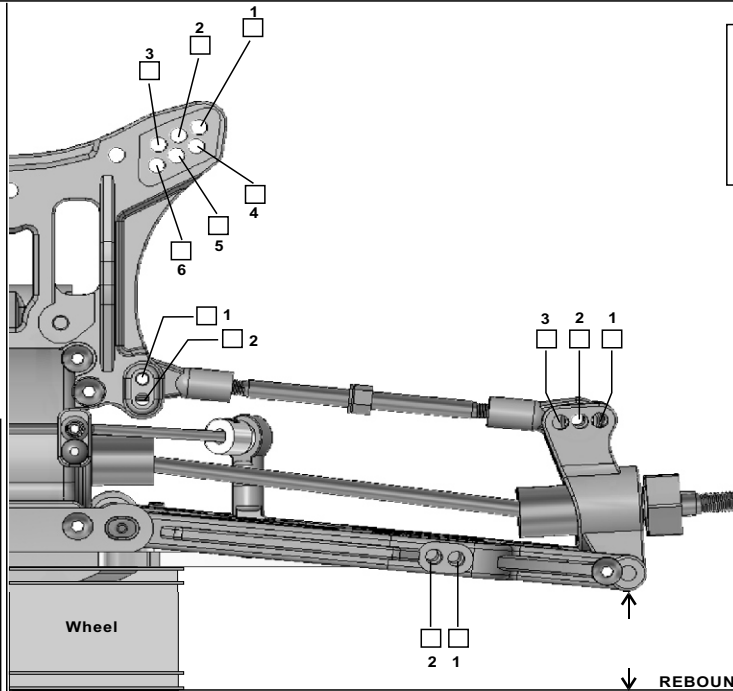
Rear Toe-In Plate



R/R



(Right = Left)



## Differential

Oil Type  SBCicon  Grease

Front:STD-5K  \_\_\_\_\_K

Center:STD-7K  \_\_\_\_\_K

Rear:STD-1K  \_\_\_\_\_K

## Tires

Front:STD

Rear:STD

Foam:STD

Others: Brand: \_\_\_\_\_

Type: \_\_\_\_\_

Insert:  Foam

## ELECTRIC MOTOR

Type: Brush  Brushless

Turn: \_\_\_\_\_ Turn: \_\_\_\_\_

RPM: \_\_\_\_\_ KV: \_\_\_\_\_

Brand: \_\_\_\_\_

## ELECTRIC SPEED CONTROLLER

Brand: \_\_\_\_\_

Type: \_\_\_\_\_

## GEAR

Super Gear: 46 T

Motor Gear: \_\_\_\_\_ T

Gear Brand:STD  Other: \_\_\_\_\_







# TO: OFNA TECHNICAL SUPPORT

7 VANDERBILT, IRVINE, CA 92618

TODAY'S DATE: month \_\_\_\_\_ day \_\_\_\_\_

1. Print out form.
2. Fill out the form completely.
3. Make a copy of purchase receipt. All replacements/repairs will not be processed, unless accompanied by proof that item(s) was purchased in the last **30** days.
4. Call OFNA technical support at (949)586-2910 for assistance or fax (949) 583-9272

1. Your name

2. Your address:

3. Your Phone Number

(\_\_\_\_\_) \_\_\_\_\_

4. Your e-mail address:

5. Summary of your problem *(check lines)*:

- a \_\_\_\_\_ part(s) is missing from my kit
- b \_\_\_\_\_ part(s) seems to be defective
- c \_\_\_\_\_ other problem

6. Name of kit / part *(on tag or end of box)*

7. Kit/part number *(on tag or end of box)*

8. Purchased from *(store name)*

- a. Store phone: (\_\_\_\_\_) \_\_\_\_\_
- b. \_\_\_\_\_ Item was a gift?

9. If a part is missing form the kit, circle the appropriate answers:

- a. Yes / No: Is kit box damaged?
- b. Yes / No: Factory Seal sticker was secure.
- c. Yes / No: I am the original owner.
- d. Yes / No: I have contacted the dealer first.

10. Describe your issue fully and include any part numbers:

\_\_\_\_\_  
\_\_\_\_\_  
\_\_\_\_\_  
\_\_\_\_\_  
\_\_\_\_\_  
\_\_\_\_\_

**Failure to fill out this form completely will cause a delay in processing!**

11. Affix proof of purchase on second page. **All replacement / repairs will not be processed unless accompanied by proof that item(s) was purchased in the last 30 days.**

### Can't find Proof of Purchase?

- A. If you lost the store receipt, ask the store if they will give you a new one.
- B. We do not accepted the following as a substitute: Hand written receipts, **ebay** transaction numbers/forms or credit card statements.

12. Send in form with your defective product, as instructed to do by the Ofna technician,(Name) \_\_\_\_\_ you spoke to. (949)586-2910 fax (949) 583-9272





# OWNER'S REGISTRATION CARD

OFNA Racing congratulates you on your purchase of our fine OFNA Product. With proper maintenance and handling this kit will provide many hours of enjoyment.

The registration card should be filled out and mailed to OFNA Racing within 10 days of purchase date.

In the event that the kit is incomplete or component parts are broken due to error in manufacturer, contact your dealer from which you purchased the kit for replacement part or call OFNA at (949) 586-2910 for your nearest dealer location. Other items such as radio and engine other covered by individual warranties.

**IMPORTANT!**

Please print or type, filling in the information listed below and mail immediately

**MAIL TO:**

OFNA RACING  
7 VANDERBILT  
IRVINE, CA. 92618  
TEL: (949) 586-2910



Write in Your Model Name and Part Number

**REGISTRATION CARD**



RACER'S NAME \_\_\_\_\_ TEL:( \_\_\_\_\_ )

ADDRESS \_\_\_\_\_

CITY \_\_\_\_\_ STATE \_\_\_\_\_ ZIP \_\_\_\_\_

DEALER'S NAME \_\_\_\_\_ TEL: ( \_\_\_\_\_ )

ADDRESS \_\_\_\_\_

CITY \_\_\_\_\_ STATE \_\_\_\_\_ ZIP \_\_\_\_\_

**OFNA  
7 Vanderbilt  
Irvine, Ca. 92618**

